



Surrey Archaeological Society

No 66

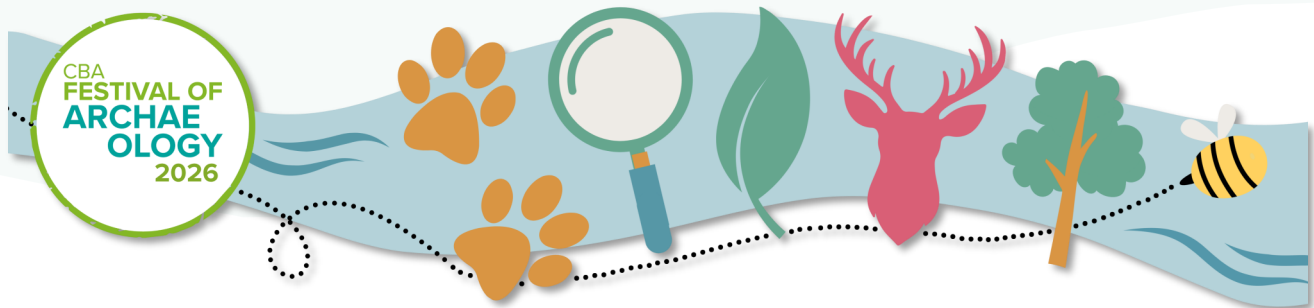
June 2026

E-newsletter

Welcome to the Society's June e-newsletter, which highlights a few of the various events – conferences, lectures, training sessions, news items, etc – which we hope to be of interest to our members. Although general queries should continue to be directed to info@surreyarchaeology.org.uk, those interested in volunteer opportunities or general outreach can contact me at outreach@surreyarchaeology.org.uk. Please also keep up-to-date via the website and social media ([@surreyarch](https://www.instagram.com/surreyarchaeology)) for group and event updates.

Anne Sassin (*SyAS Community Archaeologist*)

Festival of Archaeology



This year, the Council for British Archaeology's Festival of Archaeology will take place between **18 July** and **2 August 2026**, themed on 'archaeology and nature'. There is a varied programme of local talks, tours and other activities, both online and in-person. This includes talks about the fascinating discoveries around Ewell on **Tuesday 21 July** ([Excavating Ewell](#)) and [Ashted Roman Villa](#) on **Thursday 23 July**, [Kingston's Saxon Fayre](#) and [Hindhead's Secret Military History Walk](#) on **Saturday 25 July**, [Guided Heritage & Archaeology Walk at Hatchlands Park](#) on **Tuesday 28 July**, and more. See [the Festival website](#) for a full listing of events in the area.

As part of the Festival, the Society will also be running an open day on **Saturday 25** (11:00-15:00) at Albury Park as part of a weekend of test pitting. In addition to displays on what's been found to date, we welcome the community (including families) to come along and see (or take part in) the test pitting; no experience needed. There will also be opportunity to view the private terraced gardens, designed by John Evelyn. See the [event listing](#) for more info on the weekend.



Clacket Lane displays



Visitors will be pleased that the archaeological displays at Clacket Lane service station (produced by SCAU following excavation in 1992) are now back in place, with the artefacts having been cleaned and repaired, and a few extra added, along with new labels and stands. Thanks to Roadchef, the cases have been refurbished – repaired, repainted and cleaned, with new lighting and sand for the medieval sherds replaced. The whole effect is to make the displays brighter and more attractive, so please do be sure to (re)visit!



Surrey Hills Country Fair

Many thanks to Society volunteers Lyn, Sylvia, Ann, Rosemary, James, Kathy, Georgia, Mary-Jane and Craig who supported our stall at the Surrey Hills Enterprises Country Fair at Merrist Wood earlier this month, where we spoke to 100s of visitors about all things archaeology in Surrey – events like this only run through such support, so well done team!





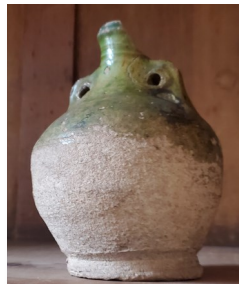
Lithics group

If you are interested in prehistoric flints and would like to learn more, the Sunday morning Lithics group might be for you. Over the next few months the group will be cataloguing some interesting flint tools from the late Judie English's collection, as well as recording assemblages from local digs. If you are interested in joining, they meet about once a month in the Abinger Research Centre. No previous knowledge is

necessary, but people with more experience are also very welcome. Please contact Sylvia Solarski (via info@surreyarchaeology.org.uk) for more information.

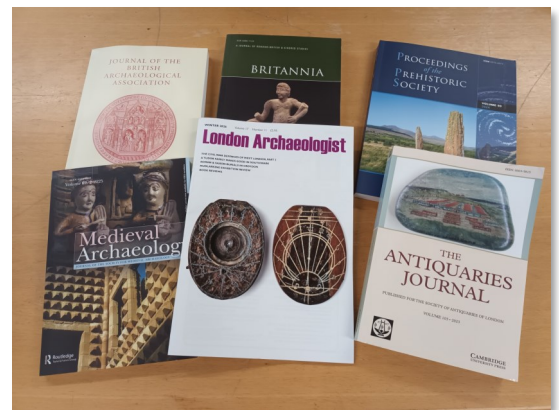
Medieval pottery group

Interested in medieval pottery? Why not join our Medieval Pottery Group, who regularly meets on alternate Sundays at our Abinger Research Centre and would love more people to join. Taster sessions are also very welcome. No experience is necessary. If interested, please contact Emma (info@surreyarchaeology.org.uk).



SyAS Library

The Society's library, which is located in the Abinger Research Centre, subscribes to a number of archaeological journals. Printed copies are held on the shelves until they become freely available online and the librarian, Helen Lynott, also has online access to certain titles. She is happy to assist members and non-members with research, either in person when the library is open, **Mondays** and **Tuesdays** 10:00-16:00, or via email at librarian@surreyarchaeology.org.uk.





Albury Park community archaeology

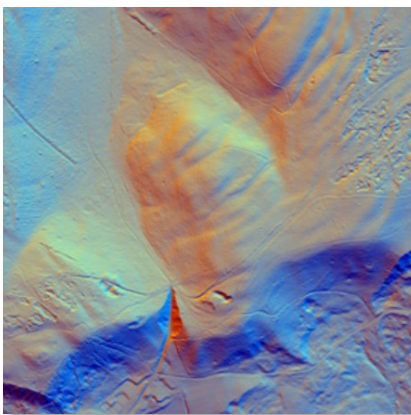
We will be returning for a fourth year of excavation this season at Albury Park to continue to investigate its deserted medieval settlement, displaced in the early 19th century (to the current village of Albury). Though little now remains of the former cottages, with the help of survey and a large-scale series of test pits spread across the site, we are working to uncover and learn more about the original settlement, which has now been revealed to include Roman activity.

Currently for 2026, there will be limited test pitting over the weekend of **24-26 July**, as part of an open day event for the Festival of Archaeology (volunteers will be needed, though space will be more limited than usual). A larger dig will also take place in September, although dates are not yet confirmed. Volunteers are welcome for both finds and digging; no prior experience needed. If interested in taking part and wanting to be added to the project mailing list, which will be updated with dates soon, please contact our community archaeologist Anne at outreach@surreyarchaeology.org.uk.



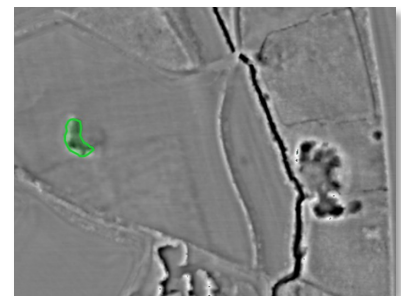
LiDAR Portal

The [Surrey LiDAR Portal](#) is an on-going online interactive citizen science map which includes various LiDAR datasets for all of Surrey, including the historic county, as well as historic maps and HER data to help in analysing the imagery.



LiDAR has enormous potential to uncover previously unknown archaeological features, and by helping map and interpret these sites online, volunteers can work to build a more complete story of the local landscape. Anyone is welcome to register for a free account, which will allow access to the interactive map. Volunteers who would like to be involved in digitising features are encouraged to read the tutorials and attend online training (contact outreach@surreyarchaeology.org.uk if you are interested, as we can discuss arranging a bespoke session).

A recent sub-project has also begun which is focusing specifically on the historic pits and quarries in Surrey. Volunteers are methodically covering areas by parish and revealing interesting insight into local industries, as well as links to the archaeological discoveries which resulted from the quarrying. Please also get in touch if you want to be more involved in this citizen science mini project.





Introduction to Animal Bones in Archaeology

This study day will cover an introduction, with hands on experience, to the methods of identification of animal bones from archaeological sites and how they can help us to understand the economy and way of life of past people. Led by Sarah Green, it will take place in the Leatherhead Institute on **7 November 2026** from 10:00-16:00 at a cost of £25. Visit the [event listing](#) for more details.

Saxon Chobham – Mincing Lane and ‘Nuns of Broomhall’

The following has been written by a library visitor, Paula Gerrard, who is looking for input on Saxon convents, and the nuns of Broomhall in particular. If anyone has any information which would be useful, please contact Paul via info@surreyarchaeology.org.uk.

I have a query concerning Saxon settlement in north Surrey and an intriguing entry on Chobham, and I wondered if anyone would be able to shed some light on this puzzle:

“Mincing Lane is so named in 1842 and no doubt takes its name from the same nuns as menechene Rude 675 ... ie “nuns’ clearing.” The second element is OE ... The Ride was on Chobham Common near Broomhall on the Berkshire border, and the nuns were the nuns of Broomhall.” The document referred to is a ME account of the bounds of Egham, explaining that the boundary is marked by Menechene Rude. (J.E.B Gover *et al.* 1934, *The place-names of Surrey*, English Place-Name Society)

So where was Menechene Rude? The John Norden map of 1607 shows a hill called Myncing Ryde, close to the north Surrey border. John Rocque’s 1762 map depicts Mincing Ride just south of the London Road in Sunningdale. This is now known as Ridgemount Road, where the original parish boundary between Chobham and Windlesham crossed.

Who were the nuns? The name Mincing dates to the 7th century. There was a medieval convent at Broomhall, and although as far as I know it has never been excavated, it was probably on the site of Broomhall Farm, Broomhall Lane, Sunningdale. The entry in Gover *et al.* implies continuity, but the earliest documentary references to the priory of St Margaret of Broomhall are from the 13th century, and I wonder if a religious house could continue from the 7th to the 13th century without leaving any records. It seems more feasible to me that the earlier convent was lost.

Ridgemount Road is on the north edge of Chobham Common. Mincing Lane is about three and a half miles away, on the edge of Chobham village. It is about half a mile long, and includes five listed buildings of the 16th and 17th centuries. In 1732/3, John Phillip left Mincing Lane Close in his will, at which time it covered 4 acres.

Although I need to stress that the mistakes are all my own, I must thank St John’s College Cambridge, SHC, SyAS, and especially Stuart Burgess (who has researched Ankerwycke Priory and) who was kind enough to meet me to discuss the nuns of Broomhall.

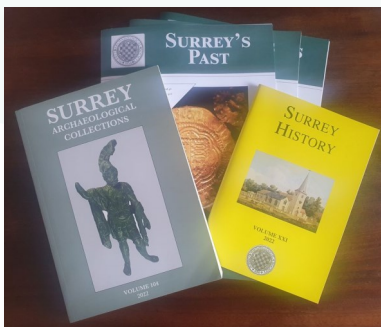


SyAS Research Committee Grants

The Research Committee would like to remind all members that grants are available for Surrey projects and are available to Society groups with no budget and to external groups with limited resources. Society excavations such as Abinger and post-excavation for Ashted, Abinger and Flexford have been funded. Surveys, documentary research, training and scientific analyses are all suitable for consideration and have been supported by Society grants in recent years, such as work on the historic excavation at Lightwater and to enable a report on the more recent Hatch Furlong dig to commence. Scientific analyses, such as C14 dating, are also covered by funds from the Bierton and Slade bequests. Applications are considered throughout the year. Details and application forms are available on the [website](#) or from the office.



Thinking about joining and getting involved?



If you aren't yet a member of SyAS, now is the perfect time to join! In addition to three issues of *Surrey's Past* a year, plus the annual journal(s) *Surrey Archaeological Collections* and *Surrey History*, members have access to a wide range of fieldwork opportunities, research projects and special interest groups, many of which have their own events programmes. To join (and see the full range of what is offered), please visit our [website](#). Some of the groups include:

Artefacts and Archives Research Group – On-site processing of artefacts, and assessment at weekly meetings, including lithics and pottery; for details, visit the [AARG webpages](#).

Medieval Studies Forum – In-person and online talks with workshops and visits focused on the period from c.400-1600; for more details, visit the [MSF](#) webpage.

Prehistoric Group – In-person meetings, regular newsletter and study of collections in museums; for more details, visit the [PG](#) webpage.

Roman Studies Group – A varied programme which includes fieldwork, monthly lecture meetings, full-day seminars and day trips; for more details, visit the [RSG](#) webpage.

Surrey Industrial History Group – In-person visits, regular meeting programme, bi-monthly newsletter and annual journal; for more details, visit the [SIHG webpage](#).

For more information on opportunities in your local region, be sure to follow SCAU (education.scau@surreycc.gov.uk and [@diggingsurreyspast](#)), as well as the Council for British Archaeology South-East (www.cbasmouth-east.org and [@CBASouthEast](#)).