



# Surrey Archaeological Society

No 65

May 2026

## E-newsletter

Welcome to the Society's May e-newsletter, which highlights a few of the various events – conferences, lectures, training sessions, news items, etc – which we hope to be of interest to our members. Although general queries should continue to be directed to [info@surreyarchaeology.org.uk](mailto:info@surreyarchaeology.org.uk), those interested in volunteer opportunities or general outreach can contact me at [outreach@surreyarchaeology.org.uk](mailto:outreach@surreyarchaeology.org.uk). Please also keep up-to-date via the website and social media ([@surreyarch](https://www.surreyarchaeology.org.uk)) for group and event updates.

Anne Sassin (*SyAS Community Archaeologist*)

### Surrey Hills Country Fair – volunteers needed

The Society will be running a stall at this year's Surrey Hills Country Fair at Merrist Wood (Worplesdon, Guildford) on the weekend of **13-14 June** (10:00-16:00), which will involve a display, handling collections and other engagement activities. The Country Fair welcomes around 3,500 visitors each year, and we would appreciate having around 3-4 volunteers at any time to help talk to people, supervise the dig box, etc. If you think you commit either a whole or half day please contact [outreach@surreyarchaeology.org.uk](mailto:outreach@surreyarchaeology.org.uk) by **Thursday 11 June**. Otherwise, do come along and say hello!



### Children's archaeological dig at Whyteleafe



East Surrey Museum will be running a family test pitting dig at Whyteleafe Recreation Ground on the weekend of **6-7 June** (10:00-16:00) as part of the Caterham Festival, alongside Caterham Rotary Club and volunteers from the Surrey Archaeological Society. This event is free, with all equipment provided. All are welcome to come along, work with the metal detectorist, and jump in the pits to see what finds they can uncover. A café and toilets are also on site. All under 16s must be accompanied by an adult. See the [Museum website](https://www.eastsurreymuseum.org.uk) for more info.



### Lithics group

If you are interested in prehistoric flints and would like to learn more, the Sunday morning Lithics group might be for you. Over the next few months the group will be cataloguing some interesting flint tools from the late Judie English's collection, as well as recording assemblages from local digs. If you are interested in joining, they meet about once a month in the Abinger Research Centre. No previous knowledge is

necessary, but people with more experience are also very welcome. Please contact Sylvia Solarski (via [info@surreyarchaeology.org.uk](mailto:info@surreyarchaeology.org.uk)) for more information.

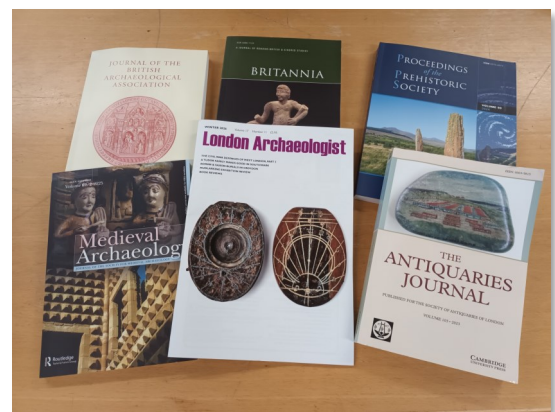
### Medieval pottery group

Interested in medieval pottery? Why not join our Medieval Pottery Group, who regularly meets on alternate Sundays at our Abinger Research Centre and would love more people to join. Taster sessions are also very welcome. No experience is necessary. If interested, please contact Emma ([info@surreyarchaeology.org.uk](mailto:info@surreyarchaeology.org.uk)).



### SyAS Library

The Society's library, which is located in the Abinger Research Centre, subscribes to a number of archaeological journals. Printed copies are held on the shelves until they become freely available online and the librarian, Helen Lynott, also has online access to certain titles. She is happy to assist members and non-members with research, either in person when the library is open, **Mondays** and **Tuesdays** 10:00-16:00, or via email at [librarian@surreyarchaeology.org.uk](mailto:librarian@surreyarchaeology.org.uk).





## Albury Park community archaeology

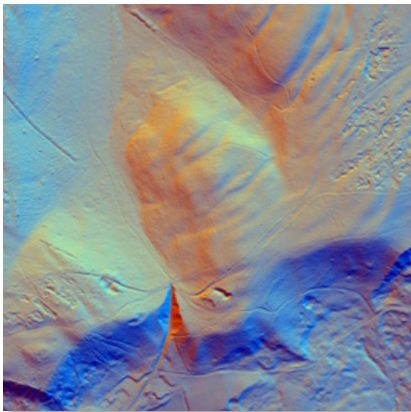
We will be returning for a fourth year of excavation this season at Albury Park to continue to investigate its deserted medieval settlement, displaced in the early 19th century (to the current village of Albury). Though little now remains of the former cottages, with the help of survey and a large-scale series of test pits spread across the site, we are working to uncover and learn more about the original settlement, which has now been revealed to include Roman activity.

Currently for 2026, there will be limited test pitting over the weekend of **24-26 July**, as part of an open day event for the Festival of Archaeology (volunteers will be needed, though space will be more limited than usual). A larger dig will also take place in September, although dates are not yet confirmed. Volunteers are welcome for both finds and digging; no prior experience needed. If interested in taking part and wanting to be added to the project mailing list, which will be updated with dates soon, please contact our community archaeologist Anne at [outreach@surreyarchaeology.org.uk](mailto:outreach@surreyarchaeology.org.uk).



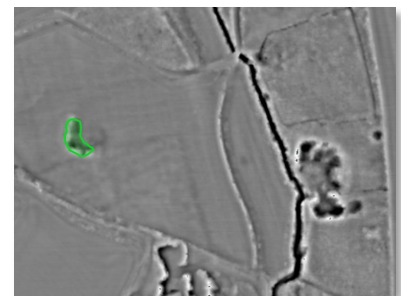
## LiDAR Portal

The [Surrey LiDAR Portal](#) is an on-going online interactive citizen science map which includes various LiDAR datasets for all of Surrey, including the historic county, as well as historic maps and HER data to help in analysing the imagery.



LiDAR has enormous potential to uncover previously unknown archaeological features, and by helping map and interpret these sites online, volunteers can work to build a more complete story of the local landscape. Anyone is welcome to register for a free account, which will allow access to the interactive map. Volunteers who would like to be involved in digitising features are encouraged to read the tutorials and attend online training (contact [outreach@surreyarchaeology.org.uk](mailto:outreach@surreyarchaeology.org.uk) if you are interested, as we can discuss arranging a bespoke session).

A recent sub-project has also begun which is focusing specifically on the historic pits and quarries in Surrey. Volunteers are methodically covering areas by parish and revealing interesting insight into local industries, as well as links to the archaeological discoveries which resulted from the quarrying. Please also get in touch if you want to be more involved in this citizen science mini project.





## St Nicolas' 150th anniversary history lectures for 2026

St Nicolas' Church, Guildford will be 150 years old in 2026 but there has been a church on the site for nearly 800 years. A celebratory series of lectures is taking place throughout 2026, which seek to explore the long rich history of the parish and its three churches on the site: from PG Wodehouse, to the oldest monument in Guildford and the pre-medieval dragon on St Catherine's Hill. Two of the lectures relate to two articles in the latest *SyAS Collections* (vol 107, 2025) on St Catherine's Hill and the Loseley Correspondence. The lectures start at 19:30, are all free of charge and will be given either in church or in the adjacent modern Parish Centre which encompasses the Loseley Chapel. The next lecture will be on **Tuesday 8 September** by Charles O'Brien on "The Ugliest Church in Surrey?" – a reassessment of St Nicolas' and its Victorian designers'. See [www.saintnics.com](http://www.saintnics.com) for the full programme.



## Collections review group

The aim of the group is to reassess all the collections held by the Society, using up-to-date methods and codes, to produce a digital record that will ultimately be placed on the website. The group meets on **Thursdays** at Abinger (10:00-15:00) (sometimes elsewhere by arrangement) and looks at every kind of find: some building material, pottery, bone, glass, metal – some days it is tiny sherds, others complete vessels! The group welcomes new members and students on work experience; previous experience is an advantage but training is given. Contact [info@surreyarchaeology.org.uk](mailto:info@surreyarchaeology.org.uk) to get involved.

## CBA South East grants

The CBA-SE distribute limited small grants to go towards research, outreach or publication, as well as a Young Archaeologists Grant which allows YAC groups, museum clubs and others to apply for funding towards sessions and materials. For more on this scheme, visit the [CBASE grants page](#).



The online annual lecture and AGM will also be held on **Tuesday 6 May** at 19:00 on 'The Highdown Big Dig 2025', presented by James Sainsbury, Curator of Archaeology at Worthing Museum. Register in advance for this Zoom meeting via the [website](#).

## Courses at Guildford Institute

Several local/art history and other adult education courses of interest are available throughout the year at the Guildford Institute, including '[Love, Sex, Marriage and the Western Church](#)' in August, which will look at 2000 years of the Church's prevailing views on the topic, run by long-time member Brian Creese. See the [website](#) for course options.

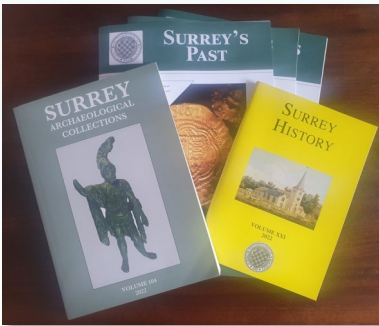


## SyAS Research Committee Grants

The Research Committee would like to remind all members that grants are available for Surrey projects and are available to Society groups with no budget and to external groups with limited resources. Society excavations such as Abinger and post-excavation for Ashted, Abinger and Flexford have been funded. Surveys, documentary research, training and scientific analyses are all suitable for consideration and have been supported by Society grants in recent years, such as work on the historic excavation at Lightwater and to enable a report on the more recent Hatch Furlong dig to commence. Scientific analyses, such as C14 dating, are also covered by funds from the Bierton and Slade bequests. Applications are considered throughout the year. Details and application forms are available on the [website](#) or from the office.



## Thinking about joining and getting involved?



If you aren't yet a member of SyAS, now is the perfect time to join! In addition to three issues of *Surrey's Past* a year, plus the annual journal(s) *Surrey Archaeological Collections* and *Surrey History*, members have access to a wide range of fieldwork opportunities, research projects and special interest groups, many of which have their own events programmes. To join (and see the full range of what is offered), please visit our [website](#). Some of the groups include:

Artefacts and Archives Research Group – On-site processing of artefacts, and assessment at weekly meetings, including lithics and pottery; for details, visit the [AARG webpages](#).

Medieval Studies Forum – In-person and online talks with workshops and visits focused on the period from c.400-1600; for more details, visit the [MSF](#) webpage.

Prehistoric Group – In-person meetings, regular newsletter and study of collections in museums; for more details, visit the [PG](#) webpage.

Roman Studies Group – A varied programme which includes fieldwork, monthly lecture meetings, full-day seminars and day trips; for more details, visit the [RSG](#) webpage.

Surrey Industrial History Group – In-person visits, regular meeting programme, bi-monthly newsletter and annual journal; for more details, visit the [SIHG webpage](#).

For more information on opportunities in your local region, be sure to follow SCAU ([education.scau@surreycc.gov.uk](mailto:education.scau@surreycc.gov.uk) and [@diggingsurreyspast](#)), as well as the Council for British Archaeology South-East ([www.cbasmouth-east.org](http://www.cbasmouth-east.org) and [@CBASouthEast](#)).