

Surrey Archaeological Society

E-newsletter

No 61

January 2026

Welcome to the Society's January e-newsletter, which highlights a few of the various events – conferences, lectures, training sessions, news items, etc – which we hope to be of interest to our members. Although general queries should continue to be directed to info@surreyarchaeology.org.uk, those interested in volunteer opportunities or general outreach can contact me at outreach@surreyarchaeology.org.uk. Please also keep up-to-date via the website and social media ([@surreyarch](https://www.surreyarchaeology.org.uk)) for group and event updates.

Anne Sassin (*SyAS Community Archaeologist*)

Book now for the Annual Symposium

The 2026 Annual Symposium will be held on **Saturday 14 March** (10:00-16:15) at East Horsley Village Hall which will celebrate 'Recent work in Surrey' in all its forms. The winner of the Margary Award will be announced and on display.

10:10 Anne Sassin (SyAS) 'Community Archaeology in Surrey – 2025 roundup'

10:40 Simon Maslin (PAS) and David Calow (SyAS) 'The PAS Database and Archaeology in Surrey'

11:40 Gillian King (Tetra Tech) 'The Mysterious Discovery of the Epsom Aurochs'

12:10 Andy Taylor (TVAS) 'Bronze Age occupation and a Middle Saxon enclosure at Moor Lane, Staines'

14:00 Alistair Douglas, (PCA) 'Saxon Minster, Cluniac Priory, Benedictine Abbey – the story of Bermondsey Abbey'

14:30 Martin Rose (SyAS) 'A Treasure Trove of Flint Artefacts in Farnham Museum'

15:30 Emma Corke (SyAS) 'Cocks Farm, Abinger 2023-25: the final three seasons'

Online booking and a full programme is available on the [event listing](#). Tickets £15 until the end of February, when they will then be £17 each (including on the door).

There are limited lunchtime facilities in East Horsley so the audience is advised to make their own arrangements. Please note that volunteers to help with the teas and coffees would be much appreciated.





Margary Award deadline fast approaching!

The Research Committee initiated a new approach to the Margary Award in 2024 with the following guidelines, and now invite submissions for 2026.

- i) The award is a recognition of a new contribution to the knowledge of the past of the historic county of Surrey.
- ii) The research or its demonstration should have taken place within the previous year, and not previously made public.
- iii) Any individual or group may enter provided there is no professional input.
- iv) Submissions for the award could take a variety of forms such as illustrations, Power-Point displays, videos, short reports and traditional displays.
- v) Nominations should be received by the committee by **28 February 2026**, with completed entries submitted at least one month before the date of the Symposium.
- vi) The judging panel will be the choice of the Research Committee, and may still be formed by the Chair of the Research Committee, the President of the Society and an invited third party.
- vii) There will be one award of £300. There will be a runner-up if the number of entries justifies it.



2025 Margary Award recipients

The committee would like to invite all members to consider nominations/submissions, which can be made before **28 February 2026** by contacting the Research Committee via info@surreyarchaeology.org.uk. This is an opportunity for community activities, youth groups and individuals to be creative in how they approach publicising their work.



SyAS Library

The Society's library at Abinger Research Centre is open on **Mondays** and **Tuesdays**, 10:00-16:00. Our librarian, Helen Lynott, can help with research, in person and via email. Here's a selection of the new books – we also have journals and newsletters, excavation reports, pamphlets, postcards, photos and colour slides. Some of our archival material is held at the Surrey History Centre in Woking, but is still listed

on our own library catalogue. Email librarian@surreyarchaeology.org.uk or phone 01306 731275 with any queries or to make an appointment.



Roman Studies Group lecture series

The RSG annual lecture series will continue on **Tuesday 3 February** (19:30) with a Zoom talk by David Rudling on 'Border Control in Roman Britain'. Other talks for the year include Emma Corke on the final season of excavation at Cocks Farm Abinger in March. Roman Studies Group members will be sent a Zoom link a week in advance. If you would like to join the Zoom talks and you are a member of SyAS, you can join RSG for free (see the [membership page](#)). Many of the previous talks can be found on the [Society's YouTube channel](#) under the RSG playlist.



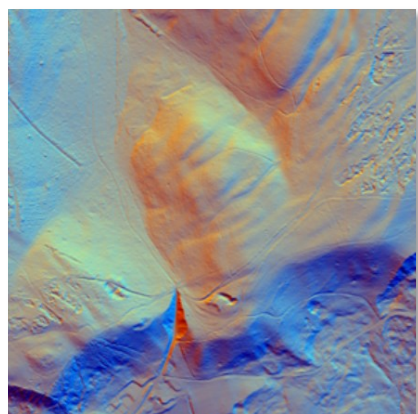
Surrey Industrial History Group lecture series



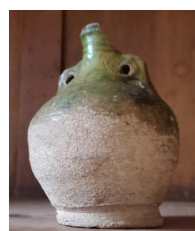
SIHG hold regular talks at Leatherhead and via Zoom throughout the year which are free to SIHG members (contact membership@sihg.org.uk). Talks can be found [online](#), including the next Zoom one 'The Match Girls Strike and how it changed British history' by Michael Astrop on **Thursday 5 February**.

LiDAR Portal

The [Surrey LiDAR Portal](#) is an on-going online interactive citizen science map which includes various LiDAR datasets for all of Surrey, including the historic county, as well as historic maps and HER data to help in analysing the imagery.



LiDAR has enormous potential to uncover previously unknown archaeological features, and by helping map and interpret these sites online, volunteers can work to build a more complete story of the local landscape. Anyone is welcome to register for a free account, which will allow access to the interactive map. Volunteers who would like to be involved in digitising features are encouraged to read the tutorials and attend online training (contact outreach@surreyarchaeology.org.uk if you are interested, as we can discuss arranging a bespoke session).



Medieval pottery group

The Medieval pottery group meets on alternate Sundays at Abinger Research Centre (9:30-15:00) and would love more people to join. Why not come for a taster session? No experience is necessary, only a fascination with the past. Contact Emma (info@surreyarchaeology.org.uk) if interested.



Collections review group

The aim of the group is to reassess all the collections held by the Society, using up-to-date methods and codes, to produce a digital record that will ultimately be placed on the website. The group meets on **Thursdays** at Abinger (10:00-15:00) (sometimes elsewhere by arrangement) and looks at every kind of find: some building material, pottery, bone, glass, metal – some days it is tiny sherds, others complete vessels! The group welcomes new members and students on work experience; previous experience is an advantage but training is given. Contact info@surreyarchaeology.org.uk to get involved.

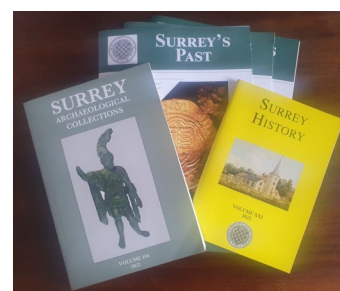


SyAS Research Committee Grants

The Research Committee would like to remind members that grants are available for Surrey projects and are available to both Society and external groups with limited resources. Excavations, surveys, documentary research, training and scientific analyses are all suitable for consideration and have been supported by Society grants in recent years, such as work on the historic excavation at Lightwater and to enable a report on the more recent Hatch Furlong dig to commence. Scientific analyses are also covered by funds from the Bierton and Slade bequests which have recently funded C14 dating for the Abinger excavation. Details and an application form are available on the [website](#) or from the office.

Thinking about joining and getting involved?

If you aren't yet a member of SyAS, now is the perfect time to join! In addition to three issues of *Surrey's Past* a year, the annual journal(s) *Surrey Archaeological Collections* and *Surrey History*, members have access to a wide range of fieldwork opportunities, research projects and special interest groups, many with their own programmes. To join (and see the full range of what is offered), please visit our [website](#). Some of the groups include:



Artefacts and Archives Research Group – On-site processing of artefacts, and assessment at weekly meetings, including lithics and pottery; for details, visit the [AARG webpages](#).

Medieval Studies Forum – In-person and online talks with workshops and visits focused on the period from c.400-1600; for more details, visit the [MSF](#) webpage.

Prehistoric Group – In-person meetings, regular newsletter and study of collections in museums; for more details, visit the [PG](#) webpage.

Roman Studies Group – A varied programme which includes fieldwork, monthly lecture meetings, full-day seminars and day trips; for more details, visit the [RSG](#) webpage.



St Nicolas' 150th anniversary history lectures for 2026

St Nicolas' Church, Guildford will be 150 years old in 2026 but there has been a church on the site for nearly 800 years. A celebratory series of lectures is taking place throughout 2026, which seek to explore the long rich history of the parish and its three churches on the site: from PG Wodehouse, to the oldest monument in Guildford and the pre-medieval dragon on St Catherine's Hill. Two of the lectures relate to two articles in the latest *SyAS Collections* (vol 107, 2025) on St Catherine's Hill and the Loseley Correspondence. The lectures start at 19:30, are all free of charge and will be given either in church or in the adjacent modern Parish Centre which encompasses the Loseley Chapel. The next lecture will be on **Tuesday 3 February** by Dr Catherine Ferguson FSA, on 'The Loseley Chapel'. See www.saintnics.com for the full programme.



Kings Place lunch and learn webinar



On **Tuesday 11 February** at 12:00, Museum of London Archaeology will be holding an online webinar on their work uncovering Southwark's past ahead of the Unite Students development at Kings Place, which will include an overview of the excavations followed by talks from the pottery, osteology and small finds specialists. See the [webpage](#) for booking.

Cumberland Lodge group tours

Discover over 350 years of history at Cumberland Lodge, a beautiful 17th-century building with deep royal connections, set in the heart of Windsor Great Park. Once a royal residence, the Lodge has welcomed monarchs, scholars, and social reformers, and today continues its legacy as an independent educational charity. Guided group tours explore the Lodge's historic rooms, architecture, and surrounding parkland, bringing its past and present to life. Group sizes: 10-30 people (by arrangement); Duration: around 60 minutes; Cost: from £15 per person (includes hot drink); Free coach/car parking on site.

For all enquiries, please email marketing@cumberlandlodge.ac.uk or call 01784 497797 to check availability and enquire. See www.cumberlandlodge.ac.uk for more info.

For more information on opportunities in your local region, be sure to follow SCAU (education.scau@surreycc.gov.uk and [@diggingsurreyspast](#)), as well as the Council for British Archaeology South-East (www.cbasouth-east.org and [@CBASouthEast](#)).