

# Surrey Archaeological Society

No 60 December 2025

## E-newsletter

Welcome to the Society's December e-newsletter, which highlights a few of the various events – conferences, lectures, training sessions, news items, etc – which we hope to be of interest to our members. Although general queries should continue to be directed to [info@surreyarchaeology.org.uk](mailto:info@surreyarchaeology.org.uk), those interested in volunteer opportunities or general outreach can contact me at [outreach@surreyarchaeology.org.uk](mailto:outreach@surreyarchaeology.org.uk). Please also keep up-to-date via the website and social media ([@surreyarch](https://www.surreyarchaeology.org.uk)) for group and event updates.

Anne Sassin (*SyAS Community Archaeologist*)

### Seasons Greetings from all of us at Surrey Archaeological Society!



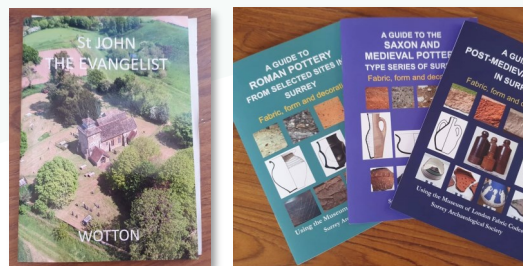
This past year has been another busy one for SyAS. Community fieldwork has included our test pitting at Albury, final season of excavation at Cocks Farm Abinger, Roman road investigation near Ewhurst, trial trenching at Hatchlands, geophysics at Fetcham Springs and LiDAR groundtruthing at Netley Park. Along with numerous talks, conferences, site visits, open days and publications, important work on local archives has also taken place thanks to our top-notch finds teams. None of our work would be possible without the dedication of our volunteers who make up our various special interest groups, committees and trustees. A very happy holiday season to all and best wishes for what 2025 will bring!



## Margary Award deadline fast approaching!

The Research Committee initiated a new approach to the Margary Award in 2024 with the following guidelines, and now invite submissions for 2026.

- i) The award is a recognition of a new contribution to the knowledge of the past of the historic county of Surrey.
- ii) The research or its demonstration should have taken place within the previous year, and not previously made public.
- iii) Any individual or group may enter provided there is no professional input.
- iv) Submissions for the award could take a variety of forms such as illustrations, Power-Point displays, videos, short reports and traditional displays.
- v) Nominations should be received by the committee by **28 February 2026**, with completed entries submitted at least one month before the date of the Symposium.
- vi) The judging panel will be the choice of the Research Committee, and may still be formed by the Chair of the Research Committee, the President of the Society and an invited third party.
- vii) There will be one award of £300. There will be a runner-up if the number of entries justifies it.



2025 Margary Award recipients

The committee would like to invite all members to consider nominations/submissions, which can be made before **28 February 2026** by contacting the Research Committee via [info@surreyarchaeology.org.uk](mailto:info@surreyarchaeology.org.uk). This is an opportunity for community activities, youth groups and individuals to be creative in how they approach publicising their work.

## SyAS Library



The Society's library at Abinger Research Centre is open on Mondays and Tuesdays, 10am to 4pm. Our librarian, Helen Lynott, can help with research, in person and via email. Here's a selection of the new books – we also have journals and newsletters, excavation reports, pamphlets, postcards, photos and colour slides. Some of our archival material is held at the Surrey History Centre in Woking, but is still listed on our own library catalogue. Email [librarian@surreyarchaeology.org.uk](mailto:librarian@surreyarchaeology.org.uk) or phone 01306

731275. Please note that the library will be open as normal the week of 22 December, but will be closed on 29 and 30 December and will resume normal hours Monday 5 January.



## Moated sites in the south-east conference



Booking is now available for the Medieval Studies Forum's winter conference on **Saturday 24 January** at East Horsley Village Hall, held jointly with CBA-SE: 'Moated sites in south-east England: 21st-century research and insights'. The programme will include several case studies of recent work of moated sites (both medieval and early post medieval) across the south-east of England, while considering themes and approaches which can be applied to older excavations. Speakers and talks include:

'Surrey's moated sites: recent research, themes and thoughts arising' (Rob Briggs, SyAS)

'Moated Sites at National Trust Properties in Kent and Sussex' (Nathalie Cohen, National Trust)

'Plumpton Place: research, survey and excavation 2019-2023' (Diccon Hart, HB Archaeology and Conservation Ltd)

"Homestead" moats and the elusive medieval garden: Romshed and Chiddingstone Burghersh in the Weald of Kent' (Alastair Oswald, English Heritage)

'Recent work on moated sites in the Darent Valley' (Anne Sassin, Kent Downs National Landscape)

'Encircling histories: recent research on the moat at Scadbury Manor, Chislehurst' (Janet Clayton, Orpington and District Archaeological Society)

The full programme and ticketing are now available (£10 for SyAS/CBASE members; £15 non-members) via the website and [event listing](#).

## Annual Symposium

The 2026 Annual Symposium will be held on **Saturday 14 March** at East Horsley Village Hall which will celebrate 'Recent work in Surrey' in all its forms. The winner of the Margary Award will be announced and on display for the attendees to view.

Speakers will include Anne Sassin (SyAS) 'Community Archaeology in Surrey – 2025 roundup', Simon Maslin (PAS) and David Calow (SyAS) 'The PAS Database and Archaeology in Surrey', Gillian King (Tetra Tech) 'The Mysterious Discovery of the Epsom Aurochs', Andy Taylor (TVAS) 'Bronze Age occupation and a Middle Saxon enclosure at Moor Lane, Staines', Alistair Douglas, (PCA) 'Saxon Minster, Cluniac Priory, Benedictine Abbey – the story of Bermondsey Abbey', Martin Rose (SyAS) 'A Treasure Trove of Flint Artefacts in Farnham Museum', Emma Corke (SyAS) 'Cocks Farm, Abinger 2023-25: the final three seasons'

Online booking and a full programme is available on the [event listing](#). Tickets £15 until the end of February, when they will then be £17 each (including on the door).





## Roman Studies Group lecture series

The RSG annual lecture series will continue on **Tuesday 3 February** (19:30) with a Zoom talk by James Bromwich on 'Commemorating the dead: contrasts and curiosities amongst those able to afford burial monuments'.

Other talks for the year include Emma Corke on the final season of excavation at Cocks Farm Abinger in March, as well as a Sussex Archaeology and History talk by Giacomo Savani on Roman Rural Baths in Roman Britain in January which RSG members are invited to book for (early booking recommended).

Roman Studies Group members will be sent a Zoom link a week in advance. If you would like to join the Zoom talks and you are a member of SyAS, you can join RSG for free (see the [membership page](#)). Many of the previous talks can be found on the [Society's YouTube channel](#) under the RSG playlist.



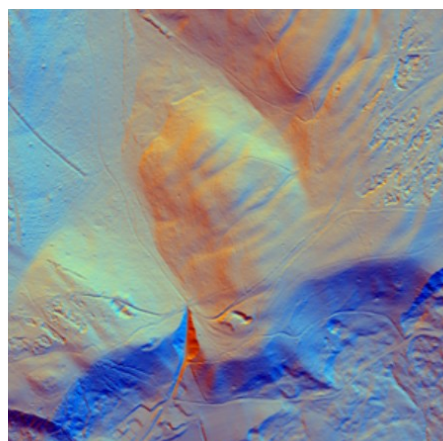
## Surrey Industrial History Group lecture series

SIHG hold regular short talks at Leatherhead and via Zoom throughout the year which are free to SIHG members (contact [membership@sihg.org.uk](mailto:membership@sihg.org.uk)). Talks can be found [online](#), including the next Zoom one 'Wind Tunnels and Slide Rules:

Women Engineers of the Royal Aircraft Establishment Farnborough' by Nina Baker on **Thursday 8 January**. See the website for the full programme.

## LiDAR Portal

The [Surrey LiDAR Portal](#) is an on-going online interactive citizen science map which includes various LiDAR datasets for all of Surrey, including the historic county, as well as historic maps and HER data to help in analysing the imagery.



LiDAR has enormous potential to uncover previously unknown archaeological features, and by helping map and interpret these sites online, volunteers can work to build a more complete story of the local landscape. Anyone is welcome to register for a free account, which will allow access to the interactive map. Volunteers who would like to be involved and help in digitising features should read the available tutorials and are encouraged to attend online training (contact us at [outreach@surreyarchaeology.org.uk](mailto:outreach@surreyarchaeology.org.uk) if you are interested, as we can discuss arranging a bespoke session).



## Medieval pottery group



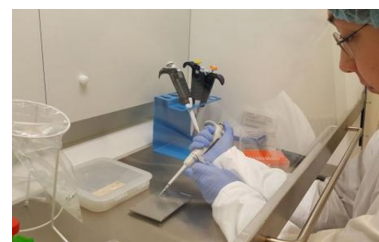
The Medieval pottery group meets on alternate Sundays at Abinger Research Centre. We would love more people to join our friendly group. Why not come for a taster session? We start at 9:30 and finish by 15:00. Currently, we are examining pottery found on antiquarian excavations, which is briefly mentioned in the short reports that were produced, but with no full assessment of the finds. No experience is necessary, only a fascination with the past. Please contact Emma via [info@surreyarchaeology.org.uk](mailto:info@surreyarchaeology.org.uk) if interested.

## Collections review group

The aim of the group is to reassess all the collections held by the Society, using up-to-date methods and codes, to produce a digital record that will ultimately be placed on the website. The group is co-operating with the Medieval and Roman Pottery groups to achieve this end. The group meets on **Thursdays** at Abinger (**10:00-15:00**) (sometimes at other times or places by arrangement) and looks at every kind of find: some people will be identifying building material, others pottery, bone, glass, metal – some days it is tiny sherds, others complete vessels! The Group welcomes new members and students on work experience. Previous experience is an advantage but training is given, so do give it a try. Contact [info@surreyarchaeology.org.uk](mailto:info@surreyarchaeology.org.uk) with any queries and to get involved.

## SyAS Research Committee Grants

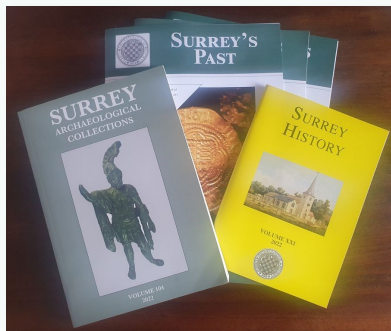
The Research Committee would like to remind members that grants are available for Surrey projects and are available to both Society and external groups with limited resources. Excavations, surveys, documentary research, training and scientific analyses are all suitable for consideration and have been supported by Society grants in recent years, such as work on the historic excavation at Lightwater and to enable a report on the more recent Hatch Furlong dig to commence. Scientific analyses are also covered by funds from the Bierton and Slade bequests which have recently funded C14 dating for the Abinger excavation. Applications are considered throughout the year and the Committee's decision is final. Details and an application form are available on the [website](#) or from the office.



Please note the CBA-SE also distribute a limited number of small grants to go towards research, outreach or publication, as well as a Young Archaeologists Grant which allows YAC groups, museum clubs and other youth organisations to apply for funding towards sessions, materials or other costs. For more on this scheme, visit the [CBASE grants page](#).



## Thinking about joining and getting involved?



If you aren't yet a member of SyAS, now is the perfect time to join! In addition to three issues of *Surrey's Past* a year, the annual journal(s) *Surrey Archaeological Collections* and *Surrey History*, members have access to a wide range of field-work opportunities, research projects and special interest groups, many with their own programmes. To join (and see the full range of what is offered), please visit our [website](#). Some of the groups you might wish to join include:

Artefacts and Archives Research Group (AARG) – On-site processing of artefacts, with further work carried out at weekly meetings, including lithics and pottery; for more details on sessions and work available, visit the [AARG webpages](#).

Medieval Studies Forum – In-person and online talks with workshops and visits focused on the period from c.400-1600; for more details, visit the [MSF](#) webpage.

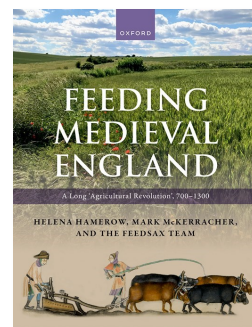
Prehistoric Group – In-person meetings, regular newsletter and study of collections in museums; for more details, visit the [PG](#) webpage.

Roman Studies Group – A varied programme which includes fieldwork, monthly lecture meetings, full-day seminars and day trips; for more details, visit the [RSG](#) webpage.

Surrey Industrial History Group – In-person visits, regular meeting programme, bi-monthly newsletter and annual journal; for more details, visit the [SIHG webpage](#).

## Feeding Medieval England

A new publication, 'Feeding Medieval England: A Long Agricultural Revolution, 700-1300' is now available as an online publication by Oxford University Press. The population of England grew steeply in the Middle Ages, especially between the 10th and 13th centuries. This volume investigates how medieval farmers managed to produce the large harvests needed to sustain this growth, growth that in turn fuelled a major expansion of towns and markets. New evidence is presented for the development of the medieval farming regimes that shaped the English landscape in ways still visible today. Please see the [website](#) for more information on this fascinating publication and how to access the various chapters.



For more information on opportunities in your local region, be sure to follow SCAU ([education.scau@surreycc.gov.uk](mailto:education.scau@surreycc.gov.uk) and [@diggingsurreyspast](#)), as well as the Council for British Archaeology South-East ([www.cbasouth-east.org](http://www.cbasouth-east.org) and [@CBASouthEast](#)).