

# Surrey Archaeological Society

No 57    September 2025

## E-newsletter

Welcome to the Society's September e-newsletter, which highlights a few of the various events – conferences, lectures, training sessions, news items, etc – which we hope to be of interest to our members. Although general queries should continue to be directed to [info@surreyarchaeology.org.uk](mailto:info@surreyarchaeology.org.uk), those interested in volunteer opportunities or general outreach can contact me at [outreach@surreyarchaeology.org.uk](mailto:outreach@surreyarchaeology.org.uk). Please also keep up-to-date via the website and social media ([@surreyarch](https://www.surreyarchaeology.org.uk)) for group and event updates.

Anne Sassin (*SyAS Community Archaeologist*)



### Roman Studies Group lecture series

The RSG annual lecture series will begin on **Tuesday 7 October** (19:30) with a Zoom talk by Dr Kris Lockyear on 'Mapping Verulamium', followed by the AGM.

Other talks for the year include Andrew Skinner on the site at Bitterne, Southampton in November, Peter Connelly on the Roman villas at Chelsham, Titsey and Bletchingley in December, James Bromwich on 'Commemorating the Dead: mausolea, towers and caskets' in February, and Emma Corke on the final season of excavation at Cocks Farm Abinger in March.

Roman Studies Group members will be sent a Zoom link a week in advance. If you would like to join the Zoom talks and you are a member of SyAS, you can join RSG for free (see the [membership page](#)).

Many of the previous talks can be found on the [Society's YouTube channel](#) under the RSG playlist.

### Medieval Studies Forum conference and AGM



The MSF AGM and annual special lecture will take place later in the autumn, date to be confirmed soon. In the meantime, please save the date for a winter conference on **Saturday 24 January** at East Horsley Village Hall, held jointly with CBA-SE and on the theme of moated sites. The programme will include several case studies of recent work of moated sites (both medieval and early post medieval) across the south-east of England, with speakers including Nathalie Cohen, Alastair Oswald, Diccon Hart and Janet Clayton. More information, including the full programme and how to book, will be available soon.



## Conservation of Archives – POSTPONED

Please note that the Surrey Local History Committee autumn conference which was to take place on **Saturday 11 October** at Surrey History Centre has had to be postponed due to unforeseen circumstances. The SLHC will confirm as soon as able when the event has been rescheduled for a later date.

## Rooted in History lecture

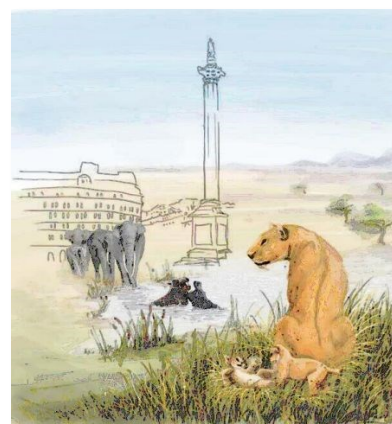


This online Zoom talk by Dr Lawrence Shaw, Lead Historic Environment Advisor, Forestry England will take place on **Thursday 9 October** (19:00). This lecture will touch on just some of the incredible archaeological and historical narratives that can be found within the nation's forests. To receive the Zoom link please contact [info@surreyarchaeology.org.uk](mailto:info@surreyarchaeology.org.uk).

## SyAS AGM and Annual Symposium

This year's Society Annual General Meeting will take place on Zoom on **Saturday 15 November** (14:00-16:00). We are delighted that the meeting will be followed by a talk by Matt Pope, Associate Professor at University College London, about Ice Age Greater London. This will include areas of Surrey and should of wide interest to members.

The 2026 Annual Symposium will be held on **Saturday 14 March** at East Horsley Village Hall which will celebrate 'Recent work in Surrey' in all its forms. The winner of the Margary Award will be announced and on display for the attendees to view amongst others.



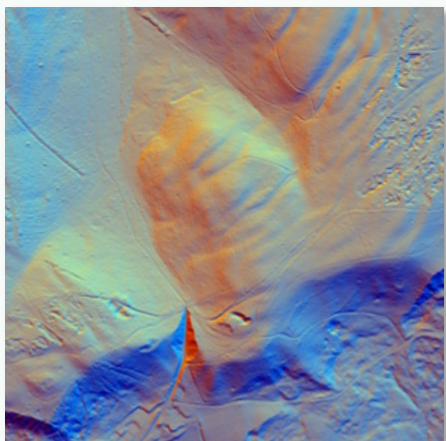
Speakers will include Anne Sassin (SyAS) 'Community Archaeology in Surrey – 2025 roundup', Simon Maslin (PAS) and David Calow (SyAS) 'The PAS Database and Archaeology in Surrey', Gillian King (Tetra Tech) 'The Mysterious Discovery of the Epsom Aurochs', Andy Taylor (TVAS) 'Bronze Age occupation and a Middle Saxon enclosure at Moor Lane, Staines', Alistair Douglas, (PCA) 'Saxon Minster, Cluniac Priory, Benedictine Abbey – the story of Bermondsey Abbey', Martin Rose (SyAS) 'A Treasure Trove of Flint Artefacts in Farnham Museum', Emma Corke (SyAS) 'Cocks Farm, Abinger 2023-25: the final three seasons'

Online booking will be available later in 2025 but please save the date in the meantime.



## LiDAR Portal

The [Surrey LiDAR Portal](#) is an on-going online interactive citizen science map which includes various LiDAR datasets for all of Surrey, including the historic county, as well as historic maps and HER data to help in analysing the imagery.



LiDAR has enormous potential to uncover previously unknown archaeological features, and by helping map and interpret these sites online, volunteers can work to build a more complete story of the local landscape. Anyone is welcome to register for a free account, which will allow access to the interactive map. Volunteers who would like to be involved and help in digitising features should read the available tutorials and are encouraged to attend online training sessions (please contact us at [outreach@surreyarchaeology.org.uk](mailto:outreach@surreyarchaeology.org.uk) if you are interested, as we can discuss arranging a bespoke session).

## Medieval pottery group



The Medieval pottery group meets on alternate Sundays at Abinger Research Centre. We would love more people to join our friendly group. Why not come for a taster session? We start at 9:30 and finish by 15:00. Currently, we are examining pottery found on antiquarian excavations, which is briefly mentioned in the short reports that were produced, but with no full assessment of the finds. No experience is necessary, only a fascination with the past. Please contact Emma via [info@surreyarchaeology.org.uk](mailto:info@surreyarchaeology.org.uk) if interested.

## Collections review group

The aim of the group is to reassess all the collections held by the Society, using up-to-date methods and codes, to produce a digital record that will ultimately be placed on the website. The group is co-operating with the Medieval and Roman Pottery groups to achieve this end.

They meets on **Thursdays** at Abinger (**10:00-15:00**) (sometimes at other times or places by arrangement) and looks at every kind of find: some people will be identifying building material, others pottery, bone, glass, metal – some days it is tiny sherds, others complete vessels! The Group welcomes new members and students on work experience. Previous experience is an advantage but training is given, so do give it a try. Contact [info@surreyarchaeology.org.uk](mailto:info@surreyarchaeology.org.uk) with any queries and to get involved.





## SyAS hard copy publications for collection at Abinger

If there are any members who still receive a paper copy of *Surrey's Past* and who would like to pick them up at our Abinger Research Centre, rather than waiting for them to be delivered in the post, please email [info@surreyarchaeology.org.uk](mailto:info@surreyarchaeology.org.uk) and request that your copy is set aside for you (deadline for the October issue is **1 October**). The same offer applies to all our members who automatically receive a printed copy of the *Collections*. Members who regularly attend meetings or groups at Abinger can take advantage of this offer too, even taking copies on behalf of other members, as long as their details are included in the email.

In this way, we are hoping to speed up the delivery of hard copies and save money on postage. The library is open on Mondays and Tuesdays, 10:00-16:00, phone 01306 731275.

## Margary Award

The Research Committee initiated a new approach to the Margary Award in 2024 with the following guidelines, and now invite submissions for 2026.

- i) The award is a recognition of a new contribution to the knowledge of the past of the historic county of Surrey.
- ii) The research or its demonstration should have taken place within the previous year, and not previously made public.
- iii) Any individual or group may enter provided there is no professional input.
- iv) Submissions for the award could take a variety of forms such as illustrations, Power-point displays, videos, short reports and traditional displays.
- v) Nominations should be received by the committee by **7 January 2026**, with completed entries submitted at least one month before the date of the Symposium.
- vi) The judging panel will be the choice of the Research Committee, and may still be formed by the Chair of the Research Committee, the President of the Society and an invited third party.
- vii) There will be one award of £300. There will be a runner-up if the number of entries justifies it.



2025 Margary Award recipients

The committee would like to invite all members to consider nominations and submissions by **7 January 2026**. This is an opportunity for community activities, youth groups and individuals to be creative in how they approach publicising their work. Nominations can be made at any time by contacting the Secretary of the Research Committee via [info@surreyarchaeology.org.uk](mailto:info@surreyarchaeology.org.uk).



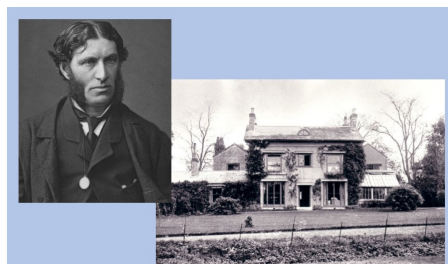
## CBA South East grants



The CBA-SE distribute a limited number of small grants to go towards research, outreach or publication, as well as a Young Archaeologists Grant which allows YAC groups, museum clubs and other youth organisations to apply for funding towards sessions, materials or other costs. For more on this scheme, visit the [CBASE grants page](#).

## SyAS Research Committee Grants

The Research Committee would like to remind all members that grants are available for Surrey projects and are available to Society groups with no budget and to external groups with limited resources. Society excavations such as Abinger and post-excavation for Ashted, Abinger and Flexford have been funded. Surveys, documentary research, training and scientific analyses are all suitable for consideration and have been supported by Society grants in recent years, such as work on the historic excavation at Lightwater and to enable a report on the more recent Hatch Furlong dig to commence. Scientific analyses are also covered by funds from the Birtton and Slade bequests which have recently funded C14 dating for the Abinger excavation. Applications are considered throughout the year and the Committee's decision is final. Details and an application form are available on the [website](#) or from the office.



## Victorian Cobham talk

On **Saturday 18 October** (19:00), Dr David Taylor will be giving a talk at Church Gate House, Cobham on 'Faith and Social Action in Victorian Cobham: Matthew Arnold at Painshill Cottage'. Tickets £20; see the [website](#) for more info.

## Into the World of Stonehenge

On **Tuesday 14 October** (18:00-20:00), Professor Duncan Garrow will be presenting a public lecture at the University of Reading. Drawing from the highly acclaimed 'World of Stonehenge' exhibition he co-curated at the British Museum in 2022, he will discuss artefacts ranging from spectacular gold and bronze metalwork to unassuming wooden objects, with an exclusive first look at a soon-to-be-launched immersive 3D experience that lets digital visitors explore the World of Stonehenge beyond the museum's walls. Although the in-person sign-up is now full, participants can still register for livestream viewing. See the [event link](#) for more info.

## Fetcham Spring Heritage Fund project

‘Communities at the River: Fetcham Springs Archaeology Project’ has been awarded a £250,000 grant by The National Lottery Heritage Fund to explore, preserve and share the rich archaeological heritage of Fetcham Springs. Surrey County Archaeological Unit (SCAU) will be running this five-year initiative at one of Surrey’s most important archaeological sites through hands-on community participation.

In 2009, excavations at Fetcham Springs revealed tantalising glimpses of a prehistoric hunting camp from the end of the last Ice Age and a high-status Roman building, offering an exceptional opportunity to understand human activity at the site across thousands of years. The new project, made possible by National Lottery players, will build on this work with a programme of fieldwork, training and events led by professional archaeologists from SCAU and supported by volunteers of all ages and backgrounds.

Volunteers will participate in archaeological excavations each summer, starting in 2025, alongside geophysical and metal-detecting surveys. These hands-on opportunities will be open to local residents, schools and community groups, offering training in archaeological techniques, finds processing and site interpretation. A dynamic programme of family-friendly activities (including flintknapping workshops, Roman and Stone Age reenactors, gladiator training sessions and open days) will bring the past to life for all generations. Schools will also benefit from free visits and themed loan boxes.

For further information please contact Hannah Potter, Community Archaeologist at SCAU ([education.scau@surreycc.gov.uk](mailto:education.scau@surreycc.gov.uk)).

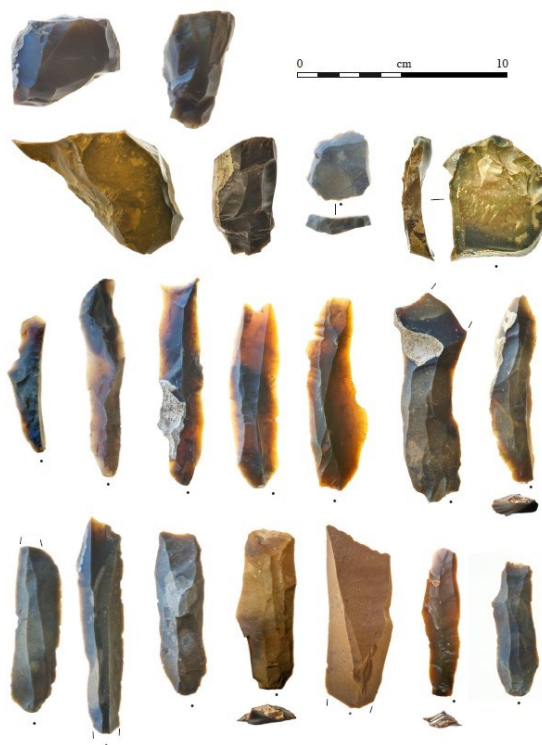


Archaeologists cleaning the walls of a Roman structure at Fetcham Springs during 2009



A previous community excavation by SCAU

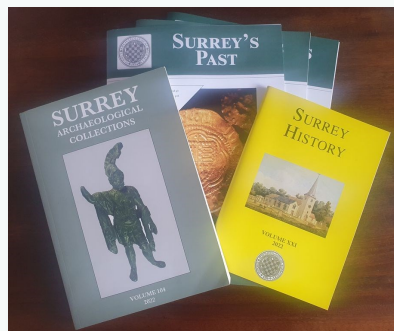
Flint tools from around 15,000 years ago, uncovered during the 2009 excavations at Fetcham







## Thinking about joining and getting involved?



If you aren't yet a member of SyAS, now is the perfect time to join! In addition to three issues of *Surrey's Past* a year, the annual journal(s) *Surrey Archaeological Collections* and *Surrey History*, members have access to a wide range of fieldwork opportunities, research projects and special interest groups, many with their own programmes. To join (and see the full range of what is offered), please visit our [website](#). Some of the groups you might wish to join include:

Artefacts and Archives Research Group (AARG) – On-site processing of artefacts, with further work carried out at weekly meetings, including lithics and pottery; for more details on sessions and work available, visit the [AARG webpages](#).

Medieval Studies Forum – In-person and online talks with workshops and visits focused on the period from c.400-1600; for more details, visit the [MSF](#) webpage.

Prehistoric Group – In-person meetings, regular newsletter and study of collections in museums; for more details, visit the [PG](#) webpage.

Roman Studies Group – A varied programme which includes fieldwork, monthly lecture meetings, full-day seminars and day trips; for more details, visit the [RSG](#) webpage.

Surrey Industrial History Group – In-person visits, regular meeting programme, bi-monthly newsletter and annual journal; for more details, visit the [SIHG webpage](#).



### Surrey Industrial History Group lecture series

SIHG hold regular short talks at Leatherhead and via Zoom throughout the year which are free to SIHG members (annual membership is currently free until the end of 2026; contact [membership@sihg.org.uk](mailto:membership@sihg.org.uk)).

Talks can be found [online](#), including the next Zoom one 'Salt of the Earth: the salt industry of the Adur valley' by Janet Pennington on **Thursday 23 October**. See the website for the full programme.

For more information on opportunities in your local region, be sure to follow SCAU ([education.scau@surreycc.gov.uk](mailto:education.scau@surreycc.gov.uk) and [@diggingsurreypast](#)), as well as the Council for British Archaeology South-East ([www.cbasouth-east.org](http://www.cbasouth-east.org) and [@CBASouthEast](#)).