

Surrey Archaeological Society

No 52

April 2025

E-newsletter

Welcome to the Society's April e-newsletter, which highlights a few of the various events – conferences, lectures, training sessions, news items, etc – which we hope to be of interest to our members. Although general queries should continue to be directed to info@surreyarchaeology.org.uk, those interested in volunteer opportunities or general outreach can contact me at outreach@surreyarchaeology.org.uk. Please also keep up-to-date via the website and social media ([@surreyarch](https://www.surreyarchaeology.org.uk)) for group and event updates.

Anne Sassin (*SyAS Community Archaeologist*)



Shining a Light on Roman Roadside Settlements in South-East England and beyond

On **Saturday 7 June**, the Roman Studies Group will again be holding its bi-annual conference, in conjunction with Sussex Archaeology and History. This will be a hybrid conference, held at Kings Church, Brooks Road, Lewes, Sussex, BN7 2BY and with an online option.

10:00-10:10 Dr David Rudling, Chairman's welcome

10:10-11:00 Prof Tony King (keynote speaker), 'On the road in the Western Roman Empire: ancient motels, caravanserais and emporia'

11:30-12:15 Mike Luke, 'Alfoldean: what do we know after 100 years of archaeological investigation?'

12:15-13:00 David Calow, 'Four coin-rich roadside settlements in Surrey'

14:00-14:40 Chris Butler, 'The Roman settlement at Hassocks in its landscape setting, and its Anglo-Saxon successor'

14:40-15:20 Blake Galloway, 'Bridge Farm: the nature of a defended settlement at the junction of two Roman roads and the River Ouse'

15:40-16:10 Matt Sparks and David Rudling, 'Roman Croydon: the course of the road and the location of the settlement'

16:10-16:40 David Staveley, 'Icklesham: which came first, the chicken or the settlement?'

16:40-16:50 David Calow, Chairman's closing remarks

Early bird tickets (available until 30 May) £18 for in-person attendance, or £12 online; thereafter £20 and £15 respectively. Booking is now open via [Eventbrite](https://www.eventbrite.com).



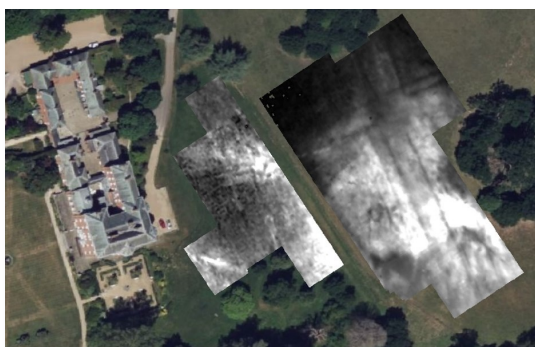
Banstead community test pitting

Members of Plateau, the Society's local group dedicated to the North Downs plateau in the area bounded by Headley, Box Hill, Mogador, Chipstead, Woodmansterne, Banstead, Nork and Tadworth, are running a multi-year test pitting programme to investigate the development of the village of Banstead and identify sites for further investigation. The 2025 season will take place on 8-10 Saturdays between **5 April** and **October**. The project is open to all, so if you live in – or have an interest in – this area and would like to take part, please contact Plateau at plateau.surrey@gmail.com.

Albury Park community test pitting

We will be returning for a third year of test pitting this season at Albury Park to investigate its deserted medieval settlement, displaced in the early 19th century (to the current village of Albury). Though little now remains of the former cottages, with the help of survey and a large-scale series of test pits spread across the site, we are working to uncover and learn more about the original settlement!

Currently for 2025, two separate weeks of test pitting are planned, **Monday 9 to Thursday 12 June** and **Monday 8 to Thursday 11 September**. There may be additional survey days as well. Volunteers are welcome for both finds and digging; no prior experience needed. If interested in taking part and wanting to be added to the project mailing list, please contact our community archaeologist Anne at outreach@surreyarchaeology.org.uk.



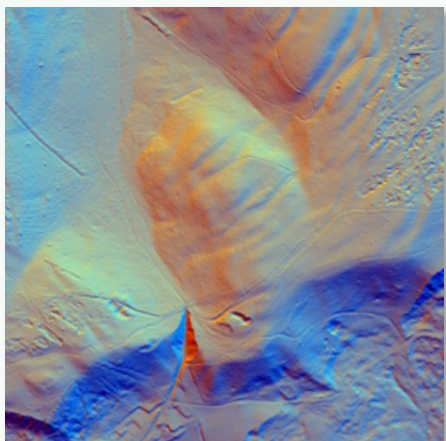
Hatchlands fieldwork

Following geophysical survey in the autumn, a small-scale excavation investigating linear landscape features will be taking place in May at Hatchlands, as part of a joint National Trust and SyAS project. This will involve trial trenches in the parkland, beginning on **Friday 16 May** and continuing from **Monday 19** until **Wednesday 21 May**. Spaces are limited, as priority has been given to NT volunteers and those who helped with the survey, but there are a small number of spaces left, particularly for those who are more experienced diggers or would like to help with finds. Please email the team at outreach@surreyarchaeology.org.uk if you are interested.



LiDAR Portal

The [Surrey LiDAR Portal](#) is an on-going online interactive citizen science map which includes various LiDAR datasets for all of Surrey, including the historic county, as well as historic maps and HER data to help in analysing the imagery.



LiDAR has enormous potential to uncover previously unknown archaeological features, and by helping map and interpret these sites online, volunteers can work to build a more complete story of the local landscape. Anyone is welcome to register for a free account, which will allow access to the interactive map. Volunteers who would like to be involved and help in digitising features should read the available tutorials and are encouraged to attend online training sessions (please contact us at outreach@surreyarchaeology.org.uk if you are interested, as we can discuss arranging a bespoke session).

SyAS Research Committee Grants

The Research Committee would like to remind all members that grants are available for Surrey projects and are available to Society groups with no budget and to external groups with limited resources. Society excavations such as Abinger in 2024 and post-excavation for Ashted, Abinger and Flexford have been funded. Surveys, documentary research, training and scientific analyses are all suitable for consideration and have been supported by Society grants in recent years, such as work on the historic excavation at Lightwater and to enable a report on the more recent Hatch Furlong dig to commence. Scientific analyses are also specifically covered by funds from the Bierton and Slade bequests which have recently funded C14 dating for the Abinger excavation. Applications are considered throughout the year and the Committee's decision is final. Details and an application form are available on the website or from the office.

Surrey Historic Environment Record (HER) office relocation

The Surrey HER team and all physical HER resources are moving. The office will be closed to staff and members of the public from **1 May** until further notice, with an anticipated reopening in June 2025. Unfortunately, it will not be possible to arrange visits to view HER material in-person whilst the office relocation is undertaken. Please do not send enquiries or other documents to the HER via post for the same reason. Whilst the HER team will have limited access to published materials, archaeological grey literature and similar office-based resources, they will continue operating business-as-usual for all digital requests during this period and remain contactable at her@surreycc.gov.uk.



Escorted tour of the Rapsley Roman villa area

Join the Roman Studies Group on **Thursday 12 June** (10:30-16:00) for a 3-mile escorted walk to visit the elusive site of one of Surrey's most interesting Roman buildings, Rapsley Roman villa. There are just a few signs of the bathhouse above ground but you can look at plans, see the landscape and imagine the rest. You can also see the site of Wykehurst Farm Roman tile works, the formidable Coneyhurst Gill, learn about the Rowhook to Farley Heath Roman road and have lunch in the Bull's Head Inn, Ewhurst.

Please visit the [event page](#) for the full itinerary and more details on the day. Contact David Calow at dm.calow@ntlworld.com to book a place.



Books and journals freely available

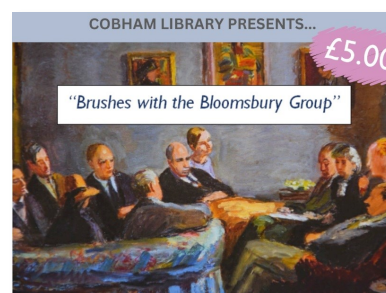
One of our members is downsizing and wishes to dispose of some journals and books, which include:

- Run of *Current Archaeology*, 2011-2024
- *SyAS Collections* for 2007-2024 (not complete)
- History Books, mainly Tudor era (*Tudor England* John Guy 1988, *The Stuart Age* Barry Coward 2003, *Tudor and Stuart Britain* John Morrill 1996, *English Social History* G M Trevelyan 1948, *The Emergence of a Nation State* Alan G R Smith 1997, *The Elizabethan Nation* Joel Hurstfield 1994, *The Myth of Elizabeth* Susan Doran & Thomas F Freeman 2003, *Earthly Necessities* Keith Wrightson 2002, *Women all on Fire* Alison Plowden 1998, *A History of the Cost of Living* John Burnett 1969, *Historical Interpretation* J J Bagley 1971, *The Weaker Vessel* (signed) Antonia Fraser 1984, *The English Civil War* Diane Purkiss 2000, *Britain First Colour Photos* Roger A Freeman 1994, *Britain at War in Colour* Binns et al 2000, *Victorian London* Liza Picard 2005, *Elizabeth's London* Liza Picard 2003, *Restoration London* Liza Picard 1997, *Dr Johnson's London* Liza Picard 2000, *Local Historians' Glossary of Words and Terms* Joy Bristow 1990, *English Landscape* W G Hoskins 1973, *Ideas of Landscape* Matthew Johnson 2007)

If any are of interest, please phone 01483 568967 or email at mary@korndorffer.co.uk.

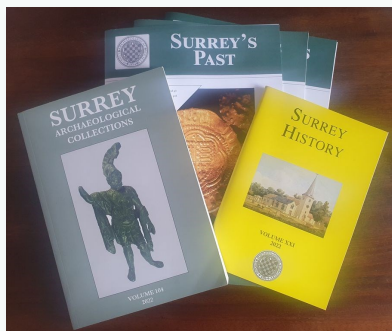
Brushes with the Bloomsbury Group: The Lushingtons of Cobham and my personal encounters

This talk by Dr David Taylor, FSA, will take place at Cobham Library on **Friday 9 May** at 13:00. To book, please email cobham.library@surreycc.gov.uk, or visit the desk in the library. Cost: £5 per person.





Thinking about joining and getting involved?



If you aren't yet a member of SyAS, now is the perfect time to join! In addition to three issues of *Surrey's Past* a year, the annual journal(s) *Surrey Archaeological Collections* and *Surrey History*, members have access to a wide range of fieldwork opportunities, research projects and special interest groups, many with their own programmes. To join (and see the full range of what is offered), please visit our [website](#). Some of the groups you might wish to join include:

Artefacts and Archives Research Group (AARG) – On-site processing of artefacts, with further work carried out at weekly meetings, including lithics and pottery; for more details on sessions and work available, visit the [AARG webpages](#).

Medieval Studies Forum – In-person and online talks with workshops and visits focused on the period from c.400-1600; for more details, visit the [MSF](#) webpage.

Prehistoric Group – In-person meetings, regular newsletter and study of collections in museums; for more details, visit the [PG](#) webpage.

Roman Studies Group – A varied programme which includes fieldwork, monthly lecture meetings, full-day seminars and day trips; for more details, visit the [RSG](#) webpage.

Surrey Industrial History Group – In-person visits, regular meeting programme, bi-monthly newsletter and annual journal; for more details, visit the [SIHG webpage](#).



Surrey Industrial History Group lecture series

SIHG hold regular short talks at Leatherhead and via Zoom throughout the year which are free to SIHG members (annual membership is currently free until the end of 2026; contact membership@sihg.org.uk).

Talks can be found [online](#), as well as info on summer tours, including a visit to the Rural Life Museum on **Thursday 5 June** and walking tour of Farnham's industries on **Thursday 3 July**. See the website for the full programme.

For more information on opportunities in your local region, be sure to follow SCAU (education.scau@surreycc.gov.uk and [@diggingsurreypast](#)), as well as the Council for British Archaeology South-East (www.cbasouth-east.org and [@CBASouthEast](#)).