

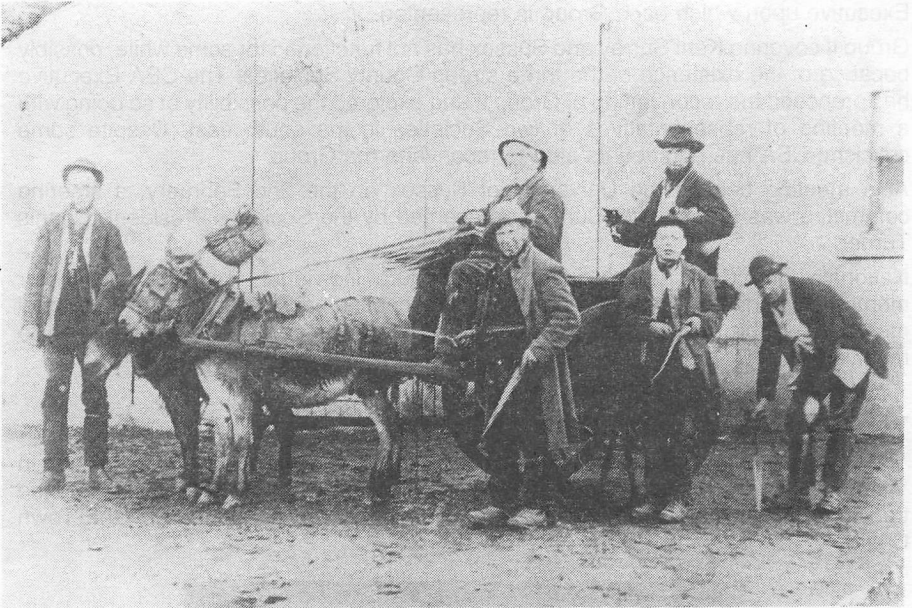


**SURREY ARCHAEOLOGICAL SOCIETY**  
CASTLE ARCH, GUILDFORD GU1 3SX  
Guildford 32454

# Bulletin

Number 255

March/April 1991



*Elstead Carrot Diggers c1870. Renowned throughout the district for their speed of operation. Note the length of the carrots from the sandy soil in the Elstead/Thursley area, and also the special tools used as in the hand of the gentleman on the right.*

---

## COUNCIL NEWS

---

**Moated site, South Park, Grayswood.** Discussions relating to the proposed gift of the Scheduled Ancient Monument by the owner to the Society, first reported in Bulletin 253, are progressing well. Present proposals envisage the Society ultimately acquiring the freehold of the site, part of which would be leased to the Surrey Wildlife Trust. The Society would be responsible for maintaining the site and arranging for limited public access. It now seems probable that this exciting project will become a reality and a small committee has been formed to investigate and advise Council on the complexities involved. Council has expressed sincere and grateful thanks to the owner of South Park for her generosity.

**Castle Training Dig.** Guildford Borough Council has approved a second season of excavation at the Castle, which will take place between the 8th and 28th July 1991. Those interested in taking part should complete the form enclosed with this issue of the Bulletin and return it to the Society.

## **CBA Group II**

The Council for British Archaeology was formed to provide a national forum for the promotion of archaeology and the dissemination of policy and ideas.

The CBA is divided into autonomous regional groups, but there is a National Executive upon which each Group is represented.

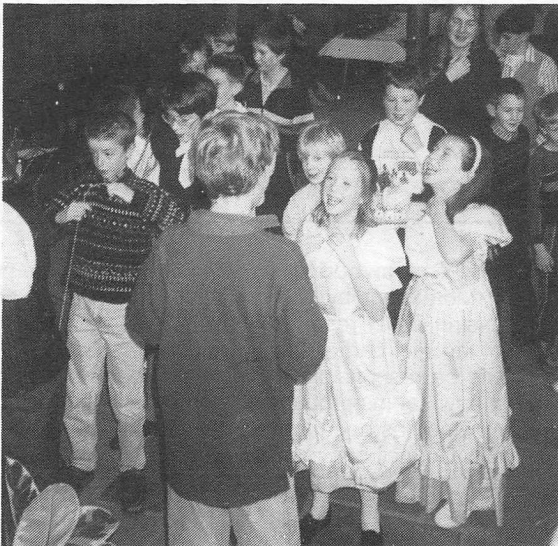
Group II covering Kent Surrey and Sussex has not functioned for some while, possibly because of the existence of the three strong County Societies. The CBA Executive has proposed the reconvening of Group II and explored the possibility of so doing with a meeting of representatives of two Societies in the south east. Despite some criticism, CBA has pursued its plan to reconvene the Group.

At a meeting held at the University of Sussex on the 2nd February, a steering committee was formed with Surrey represented by the Society's President, Dennis Turner.

Nationally, the CBA has decided that in future individuals shall be eligible for membership and that societies shall pay a subscription based on their size. Individual members will be able to subscribe according to the range of benefits they wish to receive.

## **Young Archaeologists Club**

The Club's Christmas Party was held at the Guildhall, Guildford. Members took part in Victorian games conducted by Matthew Alexander as Master of Ceremonies, and the traditional festive fare prepared by Mary Alexander was announced by the Town Crier.



## **Young Archaeologists' Club Organiser**

Applications are invited for the post of Organiser for the Young Archaeologists' Club. The post is part-time comprising 35 hours per month including one Saturday, and is based at Guildford Museum. The work will mainly involve organising sessions and field trips for Club members, who are aged between 8 and 18. The salary offered is approximately £2,500 per annum. If you are interested in the post and would like to receive full details, please write to the Hon. Secretaries at Castle Arch, Guildford.

We are pleased to welcome the following new members to the Society:

I F Dallison OBE, 35 Bluehouse Lane, Oxted, RH8 OAJ

Miss K E Dolman, 202 Bushy Hill Drive, Merrow, Guildford, GU1 2UX

Miss L Frazer, c/o 'Alouette', Silver Close, Kingswood, KT20 6QS

P D Harrison, "Whitburn", Surrey Gardens, Effingham Junction, Leatherhead, KT24 5HH

Horsley Countryside Preservation Society, Mrs P Bowley, Little Orchard, Silkmore Lane, West Horsley, KT24 6JB

D N Ing, Ravenspur, Sutton Place, Abinger Hammer, Dorking, RH5 6RN

Miss H F Wilkinson, 17 Morton, Tadworth Park, Tadworth, KT20 5UA

---

## **ARCHAEOLOGICAL RESEARCH COMMITTEE**

---

### **Annual Symposium**

**Steve Dyer**

The Archaeological Research Committee's 1991 Annual Symposium, held on 16th February at the Christian Community Centre, was admirably chaired by Rosamond Hanworth.

The proceedings were split into two parts, the morning on recent work in the county, with the afternoon devoted to the theme of the archaeology of the Thames riverside.

The Society's training dig at Guildford Castle formed the topic of the opening talk with Mary Alexander giving the historical background of the Castle and Palace. Giles Pattison then reviewed the archaeological evidence from last year's excavations.

David Williams followed with a report of the large scale excavations to have taken place in Reigate over the last two and a half years. This has given a good insight into the development of the town to the south of the High Street and west of Bell Street. An update on the Surrey Historic Landscape Project's work in the area of Norbury Park was given by Steve Dyer. A large number of earthworks are being discovered in this area and some can now be related to features shown in early cartographic sources.

A stimulating insight into the evidence available from documents was the subject of a paper by Mary Saaler, who discussed the economic effects of the Black Death in the Manor of Tillingdown.

The morning session was concluded by Phil Jones, with the summary results of the work of the County Archaeological Unit, particularly on the gravel extraction sites in the north west of the county, and the hill forts of St Ann's Hill and Anstiebury.

The afternoon's topic of archaeology on the Thames riverside was opened by Robin Nielson with a departure from the modern administrative county, who gave details of

the Charter Quay excavations, a large river site in Kingston. Here the medieval development of the area between the High Street and the river was clearly seen.

Rob Poulton moved to the realms of "Ritual" archaeology with a very stimulating paper on the deposition of artefacts in rivers as votive offerings, with particular reference to the finds in ancient river channels around Chertsey and Shepperton.

The programme was concluded by Stuart Needham with a detailed account of the neolithic occupation at the important Runnymede Bridge site, technically in Berkshire but first discovered by Surrey fieldworkers.

It is hoped to give a precis of the talks in the next Bulletin.

The Margary Award for the best display went to the Young Archaeologists' Club, with second place to Leatherhead and District Local History Society.

Thanks for a successful day must go to Rosamond Hanworth, the speakers, those groups who arranged displays, the tea ladies and all those who contributed to the event.

## **Surrey Historic Landscape Project**

**Steve Dyer**

Unfortunately due to the mild weather in the summer and autumn and modern practices, where a field is sown as soon as the harvest is lifted, the walking of ploughed fields was not possible in the last season, as the autumn planted winter wheat was showing as a crop almost as soon as it was planted. This did however enable the field work team to continue surveying the woodland and pasture at the south of Norbury Park, above Chapel Farm.

As with the areas already surveyed a large number of earthwork features have been recorded, these include lynchets, banks and a number of holloways. The study of cartographic and documentary sources is now beginning to shed some light onto the date of some of these boundaries, but much more work is needed on these sources to determine the features of more recent date from those which may represent parts of the "Celtic field" systems reported from this area. References from maps and documents may also shed some light on the areas which, due to the steepness of the slope, or as a result of the 1987 and 1990 storms, where fallen trees obscure the ground, are at the moment impossible to survey.

A floated (or water) meadow has been noted between the river Mole and the A24, south of Young Street, this will be reported on in a future **Bulletin**.

Currently we are tidying up loose ends and gaps in the woodland and pasture around Crabtree Lane, once this is complete the fieldwork team will be concentrating on the pasture fields in the Mole valley and at Chapel Farm. Particular thanks are due to Ron Hicks, Julie Wileman and Simon Day for their work over the last few months in sometimes appalling weather.

If you would like to help with the project please contact:-

Steve Dyer 081-541-8091 (daytime)  
Judie English Guildford 276724 (evenings)

---

# CONSERVATION COMMITTEE

---

## The Architectural Heritage Fund

The Architectural Heritage Fund broke through the £5 million barrier in 1989/90. Largely in response to a capital growth in the previous year, the Fund was able to increase its current loan commitments by the end of the period to more than £5.6 million in support of 77 projects. This compares very favourably with support of £4 million for 58 projects with which the year began and the Annual Report, published in October, anticipated a similar increase for next year as grants helped to push the working capital from £4.6 million on 5th April 1989 to almost £5.4 million a year later.

The purpose of the fund is very largely to grant-aid building preservation trusts. Most buildings that benefit are Grade II or even unlisted. The fund now has a development officer and has published a book on the setting up of a building preservation trust.

## Building Recording

The RCHM(E) has produced a useful leaflet called *Recording Historic Buildings: a descriptive specification*, obtainable from Fortress House (23 Savile Row, W1X 2JQ), which may be found useful in standardizing procedure. There may be a small charge, so please telephone or write to Stephen Croad of the National Buildings Record (071-973 3091).

Most members probably know CBA's handbook, *Recording Timber-framed Buildings* by N W Alcock and others, which is an indispensable aid.

The NBR is happy to receive reports, measured drawings and photographs of buildings, provided, of course, that they are of an adequate standard, and will pay a small sum for each report, etc, accepted. While most workers who produce records of vernacular buildings deposit their work locally, such work should also be placed with the NBR. Contact Stephen Croad.

## Government White Paper on the Environment

Dennis Turner

The Government White Paper on the environment, entitled *This Common Inheritance* was more in the nature of a review than a manifesto but it did announce a plan to prepare 'a register of landscapes and sites (such as battlefields) which have historic significance but where there are no longer any identifiable remains'; the setting up of a forum to discuss major 'heritage' issues and opportunities (to be chaired by a Minister), the acceptance in principle of state grants for the repair of cathedrals, and an intention to strengthen the legislation protecting scheduled monuments.

## State Grants for Listed Buildings

Publication of the government's White Paper on the environment coincided with the drying up of HBMC offers to historic churches and many secular buildings. The programme for churches had actually been unprecedented in its generosity at £9 million for the year but the money for grant offers had run out by August as a result of the level of demand and the effect of inflation and taxation on the building industry. It is a pity that the EEC does not accept that improvement to conservation practice would be achieved by reforming VAT laws to free the repair of historic buildings from this duty.

On November 9th, Mr Patten (then Secretary of State at the DoE) announced increases in funds for repairs grants in future years — £89.2 million in 1991/92 rising to £108.5 million by 1993/94 — and funding of £11.5 million for the first three years of a cathedral grants programme. The National Heritage Memorial Fund at present receives £3 million per year from the state and from 1991/92 this will be quadrupled.

---

## **LECTURES AND SYMPOSIA COMMITTEE**

---

Further to the note in Bulletin 250 (September, 1990) I would like to thank all those people who have sent me details of talks/visits available in their areas which could be offered to the public, particularly through schools, adult education, etc.

There are, however, still many gaps in the coverage of the County, and I should be pleased to hear from anyone who can help me to build up the Society's record of such talks/visits.

Nancy Hawkins, 103 Westfield Road, Mayford, Woking, Surrey GU22 9QR (tel: Woking 760084).

---

## **VISITS COMMITTEE**

---

### **SAS VISIT:**

#### **The Landscape and Archaeology of the Mole Gap**

**led by Steve Dyer and Dennis Turner (Tel: Reigate 248158)**

**Saturday 11th May 1991**

This visit will be limited to approximately 24 persons and will involve between 4 and 6 miles easy walking, mainly on public footpaths. Advance tickets are essential.

10.30 am      Meet at Leatherhead Institute, High Street, Leatherhead for talks on the history and morphology of the Mole Gap and on the Society's landscape survey project.

12.30 pm      Lunch will be taken independently.

2.00 pm      (Precise time will be given out during the morning) The party will divide into two. Half will travel with Dennis Turner by train to Boxhill Station and will traverse the Mole Gap from South to North. The other half will leave Leatherhead with Steve Dyer and will walk from North to South, returning from Boxhill Station to Leatherhead at the end of the day. Parties will exchange guides at the midway point.

The outing should end between 5 & 6.00 pm. Members requiring afternoon refreshment should carry this with them.

Tickets: Members £3.00; Visitors £4.00; Students £1.50 to include administration and Hall hire. Please send SAE with cheque to David Evans, 48 Guildford Park Road, Guildford, Surrey GU2 5NF (Tel: 0483 64079) not later than 30th April to enable arrangements to be completed. Please post-date cheque to 1st April 1991.

## **Surrey Archaeological Society Visits**

Please use your SAS Badge.

If you have lost your badge, please send for one from Mr D Evans, 48 Guildford Park Road, Guildford. Surrey GU2 5NF

Some members have reservations about wearing these badges, but they are intended to readily identify you to other people as members of the Society. This ensures security when visiting private houses and sites, ie those not open to the public, and also prevents intruders tagging onto the party and obtaining a free ride at the expense of the Society. The organiser can also readily identify party members. Non member visitors are provided with a visitors badge. Please wear the badge on all visits of the Society. If you forget your badge, a visitors badge will be provided.

---

## **ROMAN VILLA GROUP**

### **Graham Berton**

Members of the Group will shortly begin to assist the Leatherhead & District Local History Society in washing and marking the RB material from a collection of pottery excavated by A W G Lowther — some of it over sixty years ago!

The material in question is from Ashted Villa and Churchyard sites and it seems that Lowther published only what he considered to be the significant pieces. As a result, it is possible that a re-appraisal may become necessary.

Anyone interested in participation in this and for further information about the Group should contact Graham Berton, 17 Orchardfield Road, Farncombe, Godalming, Surrey GU7 3PB.

---

## **SURREY INDUSTRIAL HISTORY GROUP**

As well as the IA Guides for the various districts of Surrey, the Group is in the process of producing a photographic book of "Surrey at Work", we are looking for a wide selection of photographs illustrating the range of industrial activity in the county over the years. A typical photograph is shown on the front page.

If any member of the SAS has, or has access to, suitable photographs which they would be prepared for us to copy, would they please get in touch with Chris Shephard on 0252-710664 who will be pleased to examine the photographs and copy any which are suitable.

The Group also has several other projects on which work is continuing including restoration of the Gantry Crane at the Old Kiln Agricultural Museum at Tilford; the survey of Chilworth Gunpowder Works and of Surrey Pillboxes; and the clearance of undergrowth to record the Ram or Beam pump in the grounds of Waverley Abbey.

Anyone interested in becoming involved in these worthwhile projects should contact Peter Tarplee (Bookham 452301).

---

## NOTES

---

### Flintworking sites from Great Wildwood, Alfold

Judie English

Recent development of a golf course at Great Wildwood Manor Farm, Alfold necessitated extensive fieldwork over the 180a site involved. Walking ploughed fields yielded four discrete scatters of worked flint, and one of medieval pottery associated with bloomery tapping slag close to the moated site in Wildwood Copse. The flint sites are reported here; the remainder will be the subject of a later report.

- a) Rannett Hill — TQ04823552. Ninety four pieces including 43 secondary and 5 primary flakes, 1 flake and 2 blade cores and 14 blades or parts of blades. Tools: 2 awls and a hammer stone.
- b) Waste Water Field = TQ04443564. Thirty four pieces including 17 secondary and 1 primary flakes, a blade core and 10 blades or parts.
- c) Little Hammer Wood Field — TQ04943470. Thirty seven pieces including 19 secondary and 1 primary flakes, a blade core and 2 core rejuvenating flakes, and 5 blades or parts.
- d) Further Rickett Close — TQ05003548. One hundred and seventy eight pieces including 75 secondary and 6 primary flakes, 3 blade and 2 flake cores and a core rejuvenation flake, and 34 blades or parts. Tools: 8 awls and 9 scrapers — the scrapers notable in that most are end-scrapers made with the minimum possible secondary working of primary flakes.

All four scatters denote flint working on slightly raised sites in what can be a very wet area.

Thanks are due to Pat Nicolaysen of the Lithic Tools Research Group for assistance in identifying the pieces.

### Aubrey's description of the Farley Heath Temple

C W Atkins

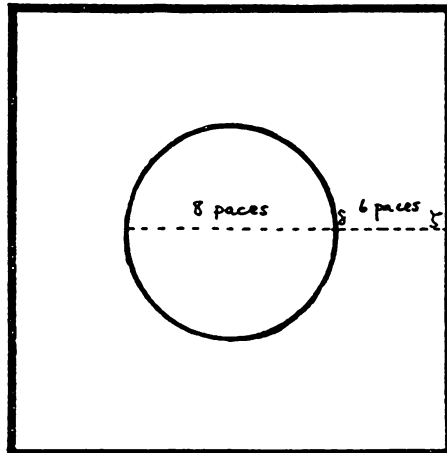
Aubrey's 'Natural History and Antiquities of Surrey' (1718-19) contains a well-known description of the Roman temple on Farley Heath in the late 17th century (volume 4, p.79). The original, handwritten, manuscript is in the Bodleian and the Department of Western Manuscripts has been good enough to provide a photograph of the Farley entry. It includes some interesting, and important, variations from the published version.

The wording of Aubrey's handwritten version has a number of slight differences from the printed work, but where the meaning is unchanged they are not commented upon further. The following are of significance.

1. The manuscript includes a simple plan, preceded with: "The appearance of it now is of this forme"

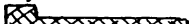
The recollections of Elias Ashmole (lines 13-17 p.79-80 in the published version) on the ground-pinning of the square and the circle are written alongside this plan, therefore referring to it directly. Aubrey adds the following, omitted from the





published version. "The Circle is eight of my paces diameter and the distance from 8 to 3 is 6 of my paces"; "Note that twenty-four of my ordinary walking paces are equall to four Perches and a foote"; "Only in the circle are rudera"; and "Elias Ashmole tells me he hath seen some of the bases of the Pillars". By his formula, Aubrey's "square" has sides of almost 56' and the "circle" a diameter of just over 22', measurements near enough to those produced by Lowther and Goodchild's 1939 excavation (46.5' x 24') to identify Aubrey's square as the ambulatory and the "circle" as the cella.

2. The published volume (lines 18 and 19) includes the intriguing comment: "Some of the Roman Tiles here are of a pretty kind of Moulding, with 8 Angles;"

The manuscript differs, and reads, "Some of the Roman Tiles here are of a pretty kind of moulding with right angles, thus, sidecut this is the profile of it. 

3. The date 1639 in line 22 is 1633 in the manuscript.

There is an interesting comment retold from 'Old Mr Oughtred'. He "told his son Ben that he did believe there was coale in great quantity underneath this Heath." In an addition, difficult to make out because of over-writing and "show-through", Aubrey seems to be saying that iron-ore is present in addition to the coal, and that "Holly trees grow in great plenty on the Heath and that is also an indication of coale".

### **Henley Park Normandy (SU935528) Audrey Monk & Barbara Blatchford**

During 1990, at the request of David Bird, SCC Principal Archaeologist, the Guildford Group of the SAS undertook some exploratory work at Henley Park, prior to refurbishment of the house and additional buildings constructed adjacent to the house.

The purpose was to ascertain whether there was any evidence for the unlocated medieval manor on the site of the proposed new buildings.

The investigation took the form of exposing the sides of a former swimming pool, the lining of which had been removed some years previously. Six areas in all were cleaned back to expose the section and natural sand was reached in each.

It was apparent that there had been considerable disturbance of the area prior to the construction of the pool and that in certain areas, especially on the south side, there had been a large make-up of soil to level the surface for the pool, natural sand being reached at depths varying from 1.5 m to 0.55 m from the surface of the pool edge.

A domed structure, 0.4 m deep, presumably a drain (although there was an absence of sediment) and another more modern stoneware drain were noted running in a south westerly direction away from the house. Relatively little was recovered from the site and of the datable material none was thought to be earlier than the present house, ie 1751.

Several small contractors holes in the area between the house and the pool were examined, but none penetrated the cellars of the existing house, and nothing other than modern debris was noted.

Although the investigation was of a very cursory nature, it would seem unlikely that the area immediately to the south west of the house was the site of the medieval manor.

The finds and drawings of the sections will be lodged at Castle Arch in due course.

### **Redhill: Wiggie (TQ285511)**

**David Williams**

Observation was kept on this large site after topsoil stripping prior to the construction of a housing estate by Crest Homes. Areas to the north east of Redhill Station were well known locations for Victorian and later flint collectors while the name Wiggie is thought to be of Saxon origin. Wiggie Farm lay a little further to the north west. While flintwork was found spread thinly across the whole area it was mostly of poor quality and much of it derived from pebbles. There were no obvious tools apart from a scraper or two. At one point towards the southern side of the site was a scatter of medieval pottery probably of 13th century date including a jug sherd with a rosette stamp from Earlswood. There were also three small flint-gritted sherds which are probably of Bronze Age date. The only feature associated with this scatter was a shallow, ill-defined and undated pit containing charcoal, which may be connected to tree clearance. Cooperation with metal detector users resulted in the recovery of a probably medieval jeton and a decorated lead weight from the vicinity of the pottery scatter.

### **Reigate: Brewery Cottages Excavation**

**David Williams**

This excavation, which was organised by the Reigate and Banstead Archaeological Coordination Committee, took place last August in advance of redevelopment plans. Funding was provided by this Society and R Watson and Sons. The area contained within it the site of a trench dug in 1976 and reported in the Collections 72, 175-190 and was situated topographically in the backland of buildings fronting Bell Street whose remains were excavated in 1988-9. The deep deposits encountered in the 1976 work were then interpreted (with hindsight unwisely in view of the scale of that work) as a former stream course which had been deliberately infilled in the late 16th century.

Approximately one metre of deposits was removed by machine. The earliest feature found, a small circular pit, probably a cesspit, lay within a much wider flat-bottomed hollow. The pit contained a small group of pottery of late 12th/early 13th century date including a large part of a curfew. The pit fill was sealed by, and the wider hollow filled with, a deposit containing much ironworking debris comprising slag and wattle-impressed daub. Another, more substantial, cesspit dating to the first half of the

13th century lay close by. This comprised originally a bottomless wooden box, 1.2 x 0.9m, set at the base of a roughly-revetted pit c2m deep. Although no wood had survived it was possible, when the trowel was used gingerly, to recover most of the constructional details of this box which had been fashioned from a variety of bits of wood, all probably re-used. The wood survived only as a powdery black smear separating the natural soft silver sand from a sand and gravel fill which contained little dating material. This cesspit had been cut by a very large excavation, c8m wide by 3m deep originally, which had, when encountered in 1976, been interpreted as the stream channel and which was only partially present within the excavation. This contained a sequence of structures which the earlier work had just missed. The earliest of these comprised three sides of a timber and stake revetment, 4.5m wide, part of which had collapsed. An inner line of stakes suggested a later rebuilding. Some stakes had survived as hard wood while others had completely rotted. A short length of deeply founded wall found higher up on the edge of the pit seems to belong to this phase. Later, this wooden structure was replaced with a substantial wall of Reigate stone blocks with horizontal timber members of which two sides were found — the third having probably been robbed. Within these walls were the remains of a plank floor and the edge of a brick structure. Associated with this phase seems to be an extension of the containing pit which had removed part of the earlier timber remains. The space between the rear of the stone wall and the pit had been filled with chalk and stone and tile rubble, and layers of soil and sand (originally interpreted as the stream filling). Pottery and other finds from these layers showed clearly that this phase can be dated to the late 16th century. The timber phase had no clear dating but may also date to the 16th century.

It is not certain what these structures represent but an industrial use such as tanning seems possible. The stone structure was dismantled in the early 18th century and the void finally filled by c1750. A slipware plate from the backfill bore the date 1717.

### **Reigate: 38-40 Bell Street**

**David Williams**

This 18th century building forms the southern termination of the west side of Bell Street. It is the only building on that side which stands to the south of the point where Bell Street is crossed by a culverted stream which, one might suppose, formed a natural boundary between the town and the priory lands. Last summer workmen engaged on a restoration and extension of this building revealed two substantial stone walls. One, parallel to the street, was found beneath the building and one, at right angles to the first, to the building's rear. The first wall was found at a depth of over one metre and was about one metre wide. Only brief observation was possible. From some point within the trench dug for piling in which the first wall was revealed the workmen recovered fragments of moulded stone. Although irretrievably damaged and incomplete the pieces resolve into the base of a finely-worked attached column which is likely to be of medieval date. Two courses of stonework are present.

While not wishing to interpret these remains of which so little was seen it is not unreasonable to suppose that in this area had stood such a building as a guesthouse for the adjacent priory.

### **Reigate: 22 High Street**

**David Williams**

During rebuilding work much of what little remained of this c1600 timber-framed building (now Ritz Video) was removed, including the stone chimney. A sawn off fragment of a girthing beam from the rear of the building was recovered by the Borough's conservation officer, John McNally, as it bore evidence for the position of window mullions. Only later was it realised that it also bore traces of a painted

inscription and other decoration by which time, sadly, the rest of the beam had been disposed of. The fugitive traces of the inscription can be read as 'the lese I fynd, the lese I find' meaning 'the less I find, the less I find'. The timber is now in the collections of the Weald and Downland Museum, Singleton. A note on the site is being prepared for the Collections.

---

## SURREY LOCAL HISTORY COUNCIL

---

An afternoon meeting of lectures has been arranged on Saturday 27th April on the subject of

### 150 YEARS OF THE BRIGHTON LINE

Three papers will be presented on: The London Croydon Railway; Redhill as a Railway Centre; and the London Brighton and South Coast Railway in the Nineteenth Century.

The meeting will commence at 2.00 pm at St Matthew's Church, Parish Rooms, Redhill. Full details were circulated with Bulletin 254 or may be obtained from Mrs G M Crocker, Hon Sec, c/o The Guildford Institute of Surrey University, Ward Street, Guildford, GU1 4LH.

---

## PUBLICATIONS

---

**Ashted Potters in Surrey 1923-1935** by Edward Hallam published privately. The story of a local pottery formed to give employment to disabled ex-servicemen from the 1914-18 war. 64 pp, 9 colour and 18 b & w illustrations. Price £8.50 plus £1.00 p & p from Hallam Publishing, PO Box 159, Epsom, Surrey KT17 1NR or from Pullingers, Epsom.

**Stoke D'Abernon Church** The Rev John Waterson, rector of Stoke D'Abernon for 35 years, has written and published *The Windows of Stoke D'Abernon and their Background* (£4.95 plus 65p p & p from D V Burt, 42 Stoke Road, Cobham). The author was responsible for embellishing the church with 15th and 16th century glass from England, France, Flanders and Cologne, much of it from the collections at Costessey, in Norfolk and Cassiobury, Herts.

**Ice Houses** Described as 'the last word on ice houses' *The Ice-Houses of Britain* by Sylvia P Beamon and Susan Roaf has been published at £100 by Routledge (11 New Fetter Lane, EC4P 4EE).

**The English Town** by Mark Girouard (Yale UP 1990 £19.95). Clive Aslet, on what he called 'vintage Girouard' in *Country Life*, drew a telling simile — 'One might compare the book's fascination to having the character of an old friend explained by an unusually urbane (and indiscreet) psychiatrist'.

---

## MISCELLANY

---

**The Brooking Collection.** At last a home has been found for the collection of Victorian architectural antiques salvaged by Charles Brooking, many of them from the Guildford area, and for many years housed at his home outside Guildford. A "reference library" of over 25,000 architectural details, including doors, windows, staircase sections, ironmongery, posting boxes, etc has opened at Thames Polytechnic in Dartford and will become a national resource. Charles Brooking will help Thames Poly to run the resource, which will be administered by a trust. The collection, which also includes contemporary trade and technical literature, will be open by appointment to students, architects and the public — particularly anyone who wants to restore their house to its original detail.

**The Hersham Thompson Family.** Mr Charles Thompson is interested in the Thompson Family who lived in Hersham from about 1760 and would like to know if there are any descendants still in the area. He has been researching the family back to the 17th century and would be pleased to learn more about later generations and to give what information he has to any other members of the family. Mr Thompson's address is: Coombers Farm, Newdigate, Surrey RH5 5EE (tel: 0306 77248).

**Journals of Roman Studies.** Due to a rapid growth in the research volumes in my collection I have found the need to part with some of the journals relating to the Society for the Promotion of Roman Studies. The following volumes, in mint condition, are on offer:- Vol. LXIX (1979), Vols. LXXIII (1983) — LXXX (1990).

Price is not a problem; I am more concerned that the volumes go to a good home. Interested parties should contact Mike Curtis, Flat 8, 5 Darlaston Road, Wimbledon, London SW19 4LF, tel: 081-944 0037.

**Correction.** The advertisement printed in Bulletin no: 253 gave the incorrect price of the Index of Bulletins 1 to 250. The correct details are as printed on the order forms enclosed in Bulletin 253:

Full copy in slide binder	£5.00
Full copy in slide binder plus mendments after issue 250 (including entries for 251-260 and corrections)	£5.75
Any copy in a ring binder — add £1.00 to the above	

(Kim Knee, 72 Laureston Road, Hackney E9 7HA)

---

## COURSES

---

**Cambridge 'A' Level Archaeology.** A correspondence course has been organised by Newark and Sherwood College conducted by Mr Sam Gorin, who has over twenty years experience of teaching and examining Archaeology. For further details and information pack contact: Mr Sam Gorin at Newark and Sherwood College, Friary Road, Newark, Notts NG24 1PB (Telephone 0636-705921).

**Building Conservation.** The Royal Institute of Chartered Surveyors two-year diploma in Building Conservation is now open to architects, engineers and builders. Total study time is estimated at nine hours per week over a 40 week year. There are two periods of attendance, usually at the College of Estate Management. Further

information available from: The Director of Course, The College of Estate Management, Whiteknights, Reading RG6 2AW (Telephone: 0734-861101).

---

## **SYMPOSIUM**

---

### **HISTORY AND ARCHAEOLOGY IN THE LONDON BOROUGH OF SUTTON**

#### **Current work and developments**

**Saturday 20th April**

**Sutton Civic Centre, St Nicholas Way, Sutton**

A Symposium organised by Sutton Heritage Service and Surrey Archaeological Society, in conjunction with the Department of Greater London Archaeology and the Carew Manor Group.

#### **PROGRAMME**

10.00 – 10.15 **Introduction** by Dennis Turner, Vice-President, Surrey Archaeological Society, and Chairman, Carew Manor Group.

10.15 – 10.45 **Further evidence of prehistoric settlement at Queen Mary's.** Steve Tucker examines the new evidence of Bronze and Iron Age occupation close to the Scheduled Ancient Monument site of Queen Mary's Hospital, Carshalton.

10.45 – 11.15 Recent discoveries in Carshalton. Clive Orton gives a round-up of archaeological developments in the village.

11.15 – 11.35 COFFEE

11.35 – 12.45 **Beddington Roman Villa revisited.** Scott McCracken brings the story of the analysis of the important site and finds up to date.

12.45 – 2.00 LUNCH

The afternoon session consists of three papers about current research on Carew Manor, Beddington, by members of the Carew Manor Group:

2.00 – 2.45 **Carew Manor from Tudor documents.** Nicholas Burnett talks about his work on previously untranscribed Carew papers.

2.45 – 3.30 **The Elizabethan and later gardens at Beddington: the recovery of the layout?** John Phillips speaks on the nationally important garden of Sir Francis Carew, and the alterations by his successors from the standpoint of the archaeological evidence.

3.30 – 3.50 TEA

3.50 – 4.35 **The first orangery in England.** Douglas Cluett reviews the evidence relating to Sir Francis Carew's famous orangery, and its subsequent history.

4.35 – 4.50 Discussion.

Tickets £12.00 including lunch (£10.00 to members of the Surrey Archaeological Society. (Discount card: £10.80; £9.00.)

---

## MEETINGS 1991

---

### 23rd March

"Famous London Doctors" by Mrs B Hazeldine to the Walton & Weybridge LHS in the Weybridge Library Lecture Hall at 3 pm.

### 2nd April

"Read your Local Paper" a talk by John Brown to the Southwark and Lambeth Archaeological Society at Hawkestone Hall, Kennington Road, London, SE1. Light refreshments at 7.30 pm.

### 3rd April

"The resiting of Lowfield Heath Windmill" a talk by Jean Shelley to the Nonsuch Antiquarian Society in St Mary's Church Hall, Kingston Road, Ewell at 8.00pm.

### 10th April

SAS Lecture Series "Henry III" given by Dr David Carpenter at the Leatherhead Institute at 8.00 pm. Full details circulated with Bulletin 254. Fee per lecture £2.50 (£3.50 non-members).

### 12th April

Talk and video on Dorking given by Miss Kate Dodson to the Holmesdale Natural History Club at the Museum, 14 Croydon Road, Reigate at 8.15 pm.

### 12th April

"Saxon excavations at Barking Abbey" a talk by Ken McGowan of the Passmore Edwards Museum to the Richmond Archaeological Society in the Vestry Hall, Paradise Road, Richmond at 8.00 pm.

### 16th April

"With Hand and Heart" — Romanesque Church Carvings, A talk by Robin Kenward to KUTAS at the Heritage Centre, Wheatfield Way, Kingston-upon-Thames at 8.00 pm.

### 17th April

SAS Lecture Series "Landholding" given by Dr John Blair at the Leatherhead Institute.

### 18th April

"Doulton and the Mortlake Connection" an illustrated talk by Dr David Redstone to the Barnes and Mortlake History Society in the Main Hall at the Sheen Lane Centre at 8.00 pm.

### 19th April

"Croydon Airport" a talk by John Sutton to the Leatherhead & District LHS in the Dixon Hall, Leatherhead Institute at 7.30 pm for 8.00 pm.

### 20th April

South West London Symposium (reconvened date) at Sutton Civic Centre. See full details elsewhere in this issue.

### 20th April

"Pictures of Old Weybridge" presented by Mr Dick Lewis to the Walton & Weybridge LHS in the Elmgrove Meeting Room, Walton at 3.00 pm.

### 24th April

"Iraq — a personal view" a talk by David Williams to the Holmesdale Natural History Club at the Museum, Reigate at 8.15 pm.

### 24th April

SAS Lecture Series "Castles and Palaces" by Dr Derek Renn, FSA at the Leatherhead Institute.

**24th April**

SAS Visit to Squerryes Court, Westerham (See Bulletin 254 for details).

**25th April**

"Thomas Holloway's College" a talk by Richard Williams to the Egham-by-Runnymede Historical Society at the Literary Institute, Egham at 8.00 pm.

**27th April**

"150 Years of the Brighton Line" a meeting organised by the Surrey Local History Council at Redhill, commencing at 2.00 pm (for further details see elsewhere in this issue).

**1st May**

"Ewell a village with a Past" a talk by Charles Abdy to the Nonsuch Antiquarian Society in St Mary's Church Hall, Kingston Road, Ewell at 8.00 pm.

**PRELIMINARY NOTICE****13th July**

SIHG Annual General Meeting at Farnham Maltings