



Plate I. 1.—GENERAL VIEW OF KING'S HEAD YARD SITE.



Plate I. 2.—KING'S HEAD YARD, PERIOD I DITCH AND PALISADE.



Plate II. 1.—KING'S HEAD YARD. PERIOD III PIT.



Plate II. 2.—KING'S HEAD YARD. PERIOD III PITS AND WELL OR WATER-CISTERN.

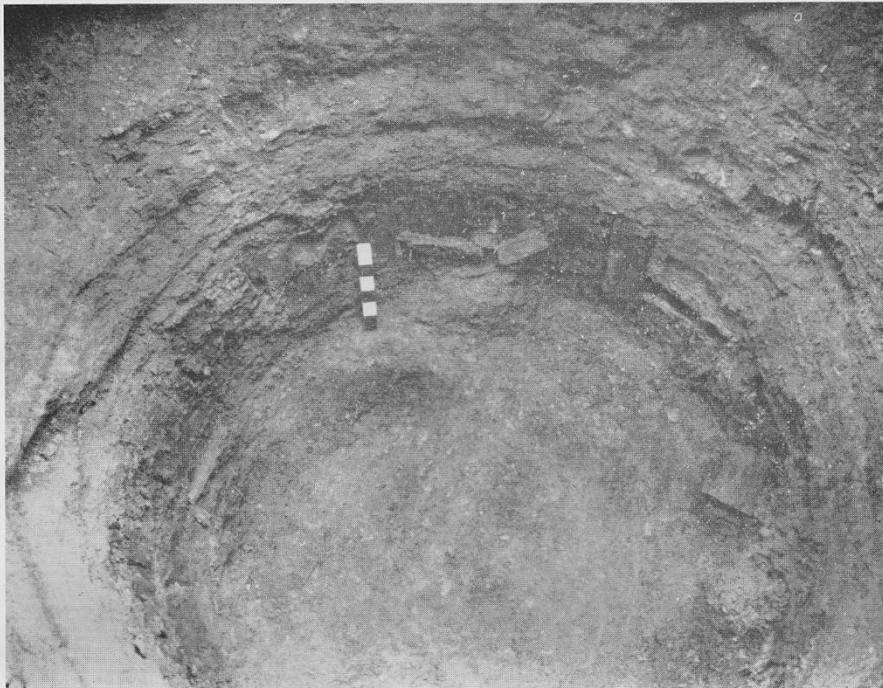


Plate III. 1.—KING'S HEAD YARD. WOOD LINING OF PERIOD III WELL OR WATER-CISTERN.



Plate III. 2.—KING'S HEAD YARD. COBBLED SURFACE OF PERIOD V HOUSE COURTYARD.



Plate IV. 1.—KING'S HEAD YARD. PERIOD V. STAKE-HOLES OF WATTLE-AND-DAUB WALL, AND IN FOREGROUND COBBLED SURFACE OF COURTYARD.



Plate IV. 2.—KING'S HEAD YARD. CENTRE, STAKE-HOLES OF PERIOD V WATTLE-AND-DAUB WALL. LEFT, PERIOD VIII PIT.





Plate V. 1.—199 BOROUGH HIGH STREET. ON RIGHT, STANE STREET SURFACE; IN CENTRE, CUT FOR BRIDGE AND GULLEY OF TIMBER.



Plate V. 2.—199 BOROUGH HIGH STREET. ON LEFT, STANE STREET SURFACE; ON RIGHT, CUT FOR BRIDGE.

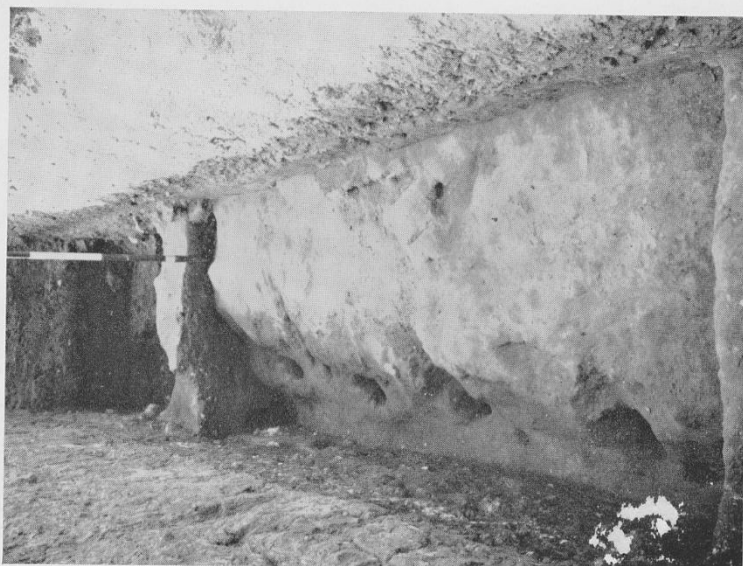


Plate VI. 1.—NEWCOMEN STREET SITE, DITCH B WITH  
LINE OF POST-HOLES.



Plate VI. 2.—NEWCOMEN STREET SITE, DITCH B, CUT  
(FOREGROUND) BY TANK.

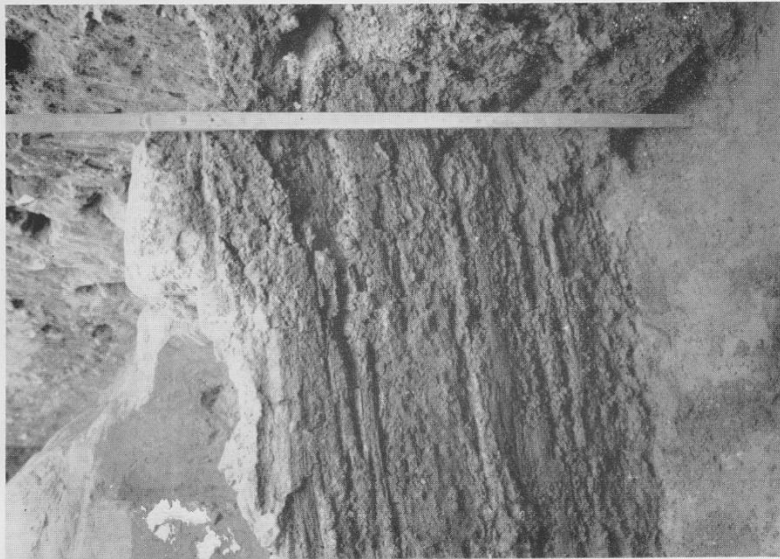


Plate VII. 1.—NEWCOMEN STREET SITE. WOODLINING  
OF TANK.

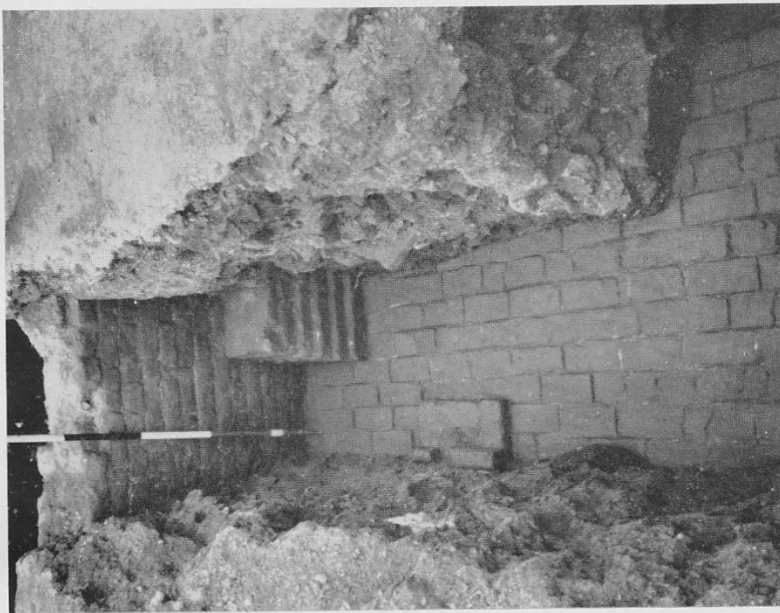


Plate VII. 2.—NEWCOMEN STREET SITE. BRICK WALL  
AND FLOOR OF CELLAR.



Plate VIII. 1.—NEWCOMEN STREET SITE. BRICK FLOOR AND PIERS OF CELLAR.



Plate VIII. 2.—INGLEDEW AND DAVENPORT'S PREMISES. WOOD LINED PIT.