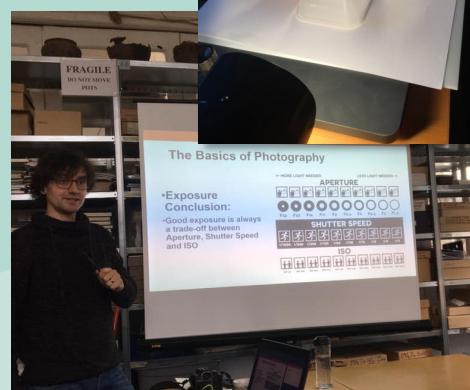


February 2020

Welcome to the February edition of the monthly e-letter updates for Surrey Archaeological Society's Heritage Fund 'Sustainable Impact' project.

February has seen more of our classroom-based courses resume, including some introductory sessions using the GIMP drawing software, led by SyAS' own Elvin Mullinger. We also were able to have some bespoke courses organised in both QGIS and finds photography, the latter which involved Antonio Reis from ASE coming to our facilities in Abinger and providing instruction on our current photographic set-up.

We are also happy to say that the new training series for a flint group who will regularly meet at Abinger on alternate weekends is finally getting started, with our first session on Sunday 29 March.



## Community Test Pitting

As part of the project initiative to increase outreach potential and engage with more areas and local groups across the county, the community test-pitting events will continue with Old Woking and Rowhurst again in the spring. This will be for adults only, rather than families, but if interested, please contact directly the emails for the respective programmes.

### Old Woking



Although spaces are very limited and not everyone may be accommodated, volunteers are invited to contact Pam Savage ([pem.savage@btinternet.com](mailto:pem.savage@btinternet.com)) to help carry out the final session of fieldwork in the historic core of Old Woking in May this year, which will include both evaluation trenches and test pits. Work will take place approximately the weekend of 16-17 May. If you are interested in joining in, whether for digging or finds, please let Pam know.

### Rowhurst, Leatherhead

We will also be returning to Rowhurst 27 April to 8 May for further investigation around the house and property, with a community open day on Saturday 2 May. This will be for adults only, but for anyone who would like to be involved with either digging or finds, please get in touch with Nigel Bond ([jnigelbond@yahoo.co.uk](mailto:jnigelbond@yahoo.co.uk)) as soon as possible.



### Flint Group



A new group is being formed in the Society which will provide regular hands-on training in lithics analysis, particularly to newer members or those with less experience looking at flints. No prior experience is needed, although an intent to commit longer term is desired.

The group will meet on Sundays (to be determined) at the Abinger Research Centre (Hackhurst Lane, Abinger Hammer RH5 6SE), beginning on Sunday 29 March. Chris Taylor, who has been leading on analysis of flints from the Henry Bury Collection in Farnham, will lead the group, with help from Sylvia Solarski and others from the AARG team.

If you are interested in getting involved and want to attend the first session, please contact [outreach@surreyarchaeology.org.uk](mailto:outreach@surreyarchaeology.org.uk) (note that, due to space, numbers will need to be limited).





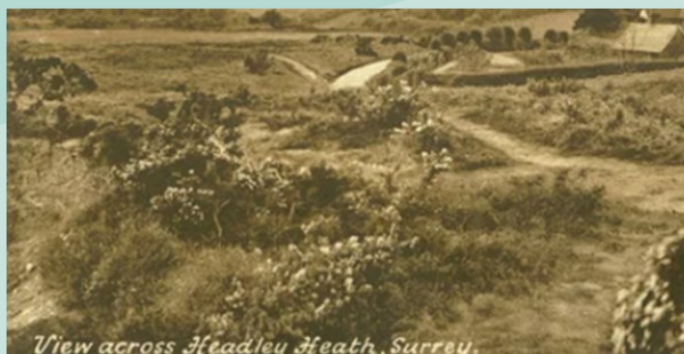
## Fieldwalking and geophysical survey at Chipstead

Although dates are still uncertain due to the recent weather, a survey incorporating both fieldwalking and geophysics with the Society's Bartington Grad-601 magnetometer are planned for a site at Chipstead in the New Year, likely late March or early April. Volunteers will be needed to help lay-out grids, fieldwalk, record finds and assist with the geophysics. Please email [outreach@surreyarchaeology.org.uk](mailto:outreach@surreyarchaeology.org.uk) to express interest, particularly for the fieldwalking elements.



## Landscape survey at Headley Heath

Plans are forming to get a small team together to undertake a landscape survey at the National Trust site of Headley Heath this winter, an open heathland, woodland and chalk downland with everything from prehistoric findspots to a WWII military training ground. To register your interest, please contact [outreach@surreyarchaeology.org.uk](mailto:outreach@surreyarchaeology.org.uk).



## Roman mosaic reconstruction project

A small team is being formed to lead on an exciting experimental archaeology activity in the coming year: reconstruction of one of the roundel panels from the Abinger Villa mosaic, which was first uncovered in the 1870s excavations and again during more recent work in 2013. Inspired by the full-scale floor mosaic which was recreated in the past year by volunteers at Butser Ancient Farm (see <https://www.youtube.com/watch?v=5gQ9jell1sA>), the project will utilise original materials for the mosaic section reconstruction.

Please contact [outreach@surreyarchaeology.org.uk](mailto:outreach@surreyarchaeology.org.uk) if you'd like to help lead with this work, and stay tuned for more details!



## Medieval landscape workshop



As part of the Sustainable Impact project, the Medieval Studies Forum are organising a study day for Saturday 14 March at Surrey History Centre in Woking from 10:00 to 15:30 which will centre around the medieval landscape and some of the less obvious and more specialist forms of research, including the use of primary documentary sources, name studies and non-settlement based landscape archaeology.

The day will include a number of informative talks, including:

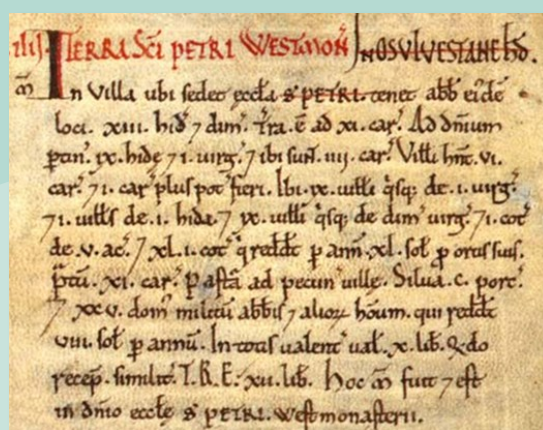
Dr Mark Forrest, Dorset Record Society 'Using manorial documents for local history research'

Dr Rebecca Gregory, Uni of Nottingham 'Names as artefacts: learning the language of the landscape'

Dr Judie English, SyAS 'Prehistoric and Late Saxon / Early Medieval transhumance in the Low Weald: landscape archaeology, placenames and regressive map analysis'

Jo Richards, SyAS 'Finding Claygate Court'

Rob Briggs, SCC 'Two Woodings and a Furzen Field: perceiving past landscapes in Puttenham parish using field-name and place-name evidence'



There will also be a map-based workshop in the afternoon and opportunity to view original maps, manorial records and title deeds that are held by SHC.

As this workshop is part of the National Lottery Heritage Fund project, there will be no charge for the day. However, as numbers will be strictly limited, we ask that those who book a spot commit to attending, and if they cannot for any reason, give as early notice as

possible so that someone on the waiting list can be offered a place.

A full programme is available online at <https://www.surreyarchaeology.org.uk/content/medieval-landscape-workshop>. To register, please contact [outreach@surreyarchaeology.org.uk](mailto:outreach@surreyarchaeology.org.uk).

