

Surrey Archaeological Sustainable Impact

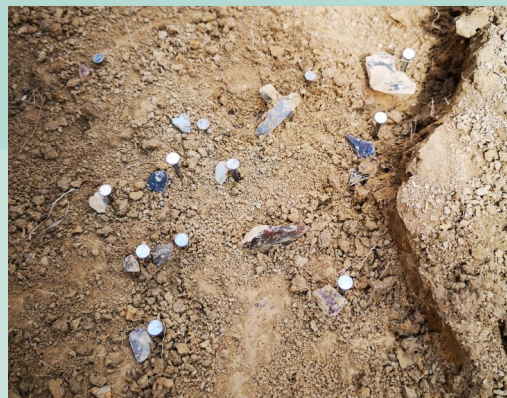
Expanding and strengthening the
Society's outreach



August 2019

Welcome to the August monthly e-letter update for the Surrey Archaeological Society Heritage Fund Sustainable Impact project. We hope everyone has had an enjoyable summer, whether taking a well-deserved holiday or participating in fieldwork.

We've had a relatively quiet month of fieldwork, although an interesting initial weekend of test pitting at Outwood took place as part of the Mesolithic Hinterlands of Surrey project. A small number of volunteers investigated the first test pit, excavating and recording almost 200 in-situ flints, which included blades, microburins and microliths. Plans are already in place for further pits in the Outwood area in the next few months, so please keep an eye on dates when they become available, if interested in getting involved.



August also saw one of our open day events in Farnham where we partnered with the Museum and Butser IX Legion and were able to treat visitors to a preview of the Henry Bury Palaeolithic Project which takes place at the Museum every month (for more info on the project or how to get involved, please contact rosemary.hooker@blueyonder.co.uk).

A final note is to remind any members who have not had a chance to visit our Research Centre at Abinger that we will be open for Heritage Open Days on Sunday 15 September from 11:00 to 16:00. This will be a chance to explore the library collections and chat to members about their work. See the website for more info.

As always, anyone who is interested in any of the training or volunteer opportunities (or who wants to discuss potential future ones) please do contact me at outreach@surreyarchaeology.org.uk. Be sure to also keep up-to-date on activities or courses via the website (www.surreyarchaeology.org.uk) and on social media ([@surreyarch](https://twitter.com/surreyarch)).

Anne Sassin
Projects and Outreach Officer

Community Test Pitting

As part of the project initiative to increase outreach potential and engage with more areas and local groups across the county, the community test-pitting events will continue with Nonsuch Park in September and Rowhurst again in October. If interested in any aspect of these programmes, whether digging, processing or just lending a hand, please contact outreach@surreyarchaeology.org.uk.

Ewell

Volunteers are invited to book a slot for test-pitting at Nonsuch Park in the Old Stables Field over the Heritage Open Weekend (21-22 September). All sessions must be booked in advance.



Rowhurst, Leatherhead

We will be returning to Rowhurst in October, with plans currently for the last week of the month (23-27 October). This will be for adults only, rather than families, though we may open this up to children again on future days. Please do get in touch if interested.

Monument Condition Assessment training course

This two-day course on 7-8 September at Hatchlands Park is led by National Trust and Archaeology South-East archaeologist Richard James, who is helping to ensure that archaeological sites on NT land are monitored continually to help inform conservation work, identify problems and ensure future preservation. Once trained, volunteers will continue to visit and monitor sites throughout the year, taking photographs and collecting data. Participants will be encouraged to apply their training and be registered as NT 'HART' (Heritage Archaeology and Ranger Team) volunteers.

Day 1

10.00-10.30 Arrive at Hatchlands

10.30-13.15 Classroom Training: The National Trust, Archaeology and Assessing Condition

13.15-14.00 Lunch

14.00-15.30 Guided walk at Hatchlands

Day 2

10.00-10.30 Arrive at Hatchlands

10.30-12.30 Fieldwork Exercise: Condition Assessment

12.30-13.15 Lunch

13.15-14.30 Debrief and Discussion – HART in Practice



No prior training is necessary, but volunteers should be physically fit, able to walk to and around monuments (sometimes in remote locations), and have basic map-reading skills. For any queries and to book, contact outreach@surreyarchaeology.org.uk.

QGIS courses

Led by Simon Miles (loosegoat.com), these one-day courses will provide an introduction to the uses of GIS and QGIS for archaeological purposes, to be followed by more advanced workshops into on the key concepts and capabilities of the programme.

All of the courses on QGIS will take place at Abinger Hammer Village School and run from 10:00-16:00. Tea and coffee will be provided, but please bring your own lunch. As these courses are part of the HLF training programme, they will be provided at no charge. However, booking is essential and spaces are limited to 5-6, so we do ask that you commit to attending, once signed up. Please email outreach@surreyarchaeology.org.uk to book and for any queries.

Introduction to GIS and QGIS:

This is an ideal workshop for those that want to learn about what GIS is and how it can be applied in Archaeology. Using a free piece of GIS software called QGIS you'll apply what you've learned about GIS in QGIS. After learning the basics of software, you will discover how to setup new projects, create, load and edit data, plus explore open-data resources. You will also use data supplied from a recently excavated Roman site in Surrey to make the learning more real. Throughout the day you will discuss wider 'GIS in Archaeology' themes, based upon what you have learned.

This course, on Saturday 5 October, is currently fully booked, but please get in touch if you wish to be placed on a waiting list, or to express an interest in future ones.

QGIS for Archaeology:

This course will take a more advanced look at the uses of QGIS and will build upon the previous workshop, but attending that course is not a prerequisite of attending this one.

Using actual site data, combined with a series of Open-Data sources you will explore how to use QGIS. You will look at pre-excavation tasks such as geophysics, field walking and site grids, as well as post-excavation (find-plotting, digitising of trenches and geo-referencing).

This course is being run on Saturday 12 October (with more potentially planned to allow for those who wish to undergo this course).

**Abinger Hammer Village School, Hackhurst
Lane, Abinger Hammer RH5 6SE**

Please note parking is not available at the school, but is elsewhere in the village, including the village carpark and village hall on Felday Road. Gomshall Station is also approximately half a mile walk away.

