

Surrey Archaeological Sustainable Impact

Expanding and strengthening the Society's outreach

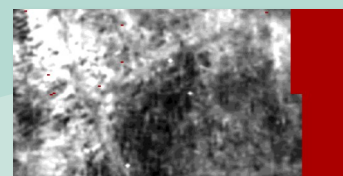


April 2019

Welcome to the April monthly e-letter update for Surrey Archaeological Society's HLF Sustainable Impact project. We're back to the grind with fieldwork and looking forward to the next few months of survey and excavation.



The resistivity survey at Old Park last month was very successful (surprising with the high amount of flints!), and the results will be written up for the bulletin shortly. A small team managed to get some good experience with the machine and will be using their skills for next month's surveys in Old Woking and Leatherhead. Most were also able to spend some time processing the results and learning more about geophysics theory and various software options.



This past weekend also saw a very enjoyable test pitting programme in Old Woking, including an open day which brought in a good number of local families. Thanks as always need to go to the Society volunteers who made the day run efficiently, and to all the diggers and finds processors who worked hard over the few days. Those who are able to come to the test pitting in Leatherhead and Ewell in May, please do let us know!



As always, anyone who is interested in any of the training or volunteer opportunities (or who wants to discuss potential future ones) please do contact me at outreach@surreyarchaeology.org.uk. Be sure to also keep up-to-date on activities or courses via the website (www.surreyarchaeology.org.uk) and on social media ([@surreyarch](https://www.instagram.com/surreyarch)).



Anne Sassin

Projects and Outreach Officer



Community Test Pitting

As part of the project initiative to increase outreach potential and engage with more areas and local groups across the county, the community test-pitting events will continue this spring and summer, including Rowhurst, Leatherhead and Bourne Hall, Ewell in May, Bletchingley in August, Nonsuch Park in September and Rowhurst again in October. If interested in any aspect of these programmes, whether digging, processing or just lending a hand, please contact outreach@surreyarchaeology.org.uk.

Leatherhead

Test-pitting is taking place the first three weekends of May (4, 5, 11, 12, 18 and 19) at Rowhurst and Teazle Wood near Leatherhead, with an open day on the Bank Holiday Monday (6 May). For most of the days members of the public will need to apply for a time-slot to excavate, with sieving and finds-processing also taking place. More experienced diggers will also be needed to help lead on the excavations and processing, as well as further digging in the week, including setting up and taking down.



Ewell

On Saturday 25 May, there will be an open day at Bourne Hall (11:00-16:00) for the public to come along and have a try at digging, sieving and processing finds (as well as engaging with the Roman legionaries). Volunteers to help with the test-pitting would be much appreciated.



Participants are also invited to book a slot for a weekend of test-pitting at Nonsuch Park in the Old Stables Field over the Heritage Open Weekend (21-22 September). All sessions must be booked in advance.

Farnham

A select number of test pits will be dug as part of the Finding Farnham project, including working with guiding groups and the local YAC club from the Museum. These will take place in Farnham Park on 26 and 28 June. Any volunteers who would be willing to help with the sessions would be appreciated.



Volunteers are also welcome for a weekend of community test pitting at Holt Pound which will run on 6-7 July, with likely further digging in the week.

Bletchingley

As part of the Mesolithic Hinterlands of Surrey project, test-pitting will take place in the Bletchingley area over select weekends in August (tentatively 10-11 and 17-18). Please send expressions of interest to be kept up-to-date as this project develops.

Geophysics training

Further opportunities with both magnetometry and resistivity survey will take place in the next two months.

A resistivity survey with the new RM Frobisher will take place at Rowhurst, Leatherhead over 24-26 April (these dates are weather dependent, but please express an interest if you have not already done so).

Though no dates have been officially assigned, early-mid May will likely see two surveys: a resistivity survey in Old Woking and magnetometry in Holt Pound, Farnham. Those who are interested please contact out-reach@surreyarchaeology.org.uk for more details and updates as plans progress.

Details of further opportunities to hopefully follow soon!



QGIS application

For those who are looking for a chance to keep their QGIS skills fresh, there is also opportunity to work with the Charlwood excavations (most recent fieldwork updates can be found at <https://www.surreyarchaeology.org.uk/content/bull-468> and <https://www.surreyarchaeology.org.uk/content/bull-457>) and help in the research and site maps. Please contact Rose Hooker (rosemary.hooker@blueyonder.co.uk) if interested.

Excavation

The latest season of excavation will take place at Cocks Farm, Abinger this June-July, exploring the Roman and Iron Age features in the field adjacent to the Roman villa first discovered in the 1870s. The dates are Saturday-Wednesday 15-19 June, Saturday-Wednesday 22-26 June, Monday-Wednesday 1-3 July, Saturday-Wednesday 6-10 July and Saturday-Tuesday 13-16 July.

Priority will be given to Surrey Archaeological Society and Roman Studies Group members but it is open to non-members too. There is no fee, but new volunteers are



expected to commit to five days over the course of the month. Students are welcome and work experience students can be accommodated. If you are interested in taking part, please contact Nikki Cowlard at nikki.cowlard@btinternet.com.